

# GGCX Rabbit pAb

Catalog No.: A1806

1 Publications

## Basic Information

### Observed MW

110kDa

### Calculated MW

88kDa

### Category

Primary antibody

### Applications

WB, ELISA

### Cross-Reactivity

Human, Mouse

## Background

This gene encodes an integral membrane protein of the rough endoplasmic reticulum that carboxylates glutamate residues of vitamin K-dependent proteins to gamma carboxyl glutamate, a modification that is required for their activity. The vitamin K-dependent protein substrates have a propeptide that binds the enzyme, with carbon dioxide, dioxide, and reduced vitamin K acting as co-substrates. Vitamin K-dependent proteins affect a number of physiologic processes including blood coagulation, prevention of vascular calcification, and inflammation. Allelic variants of this gene have been associated with pseudoxanthoma elasticum-like disorder with associated multiple coagulation factor deficiency. Alternative splicing results in multiple transcript variants.

## Recommended Dilutions

**WB** 1:500 - 1:2000**ELISA** Recommended starting concentration is 1 µg/mL. Please optimize the concentration based on your specific assay requirements.

## Immunogen Information

### Gene ID

2677

### Swiss Prot

P38435

### Immunogen

Recombinant protein (or fragment). This information is considered to be commercially sensitive.

### Synonyms

VKCFD1; GGCX

## Contact

 | 400-999-6126 | [cn.market@abclonal.com.cn](mailto:cn.market@abclonal.com.cn) | [www.abclonal.com.cn](http://www.abclonal.com.cn)

## Product Information

### Source

Rabbit

### Isotype

IgG

### Purification

Affinity purification

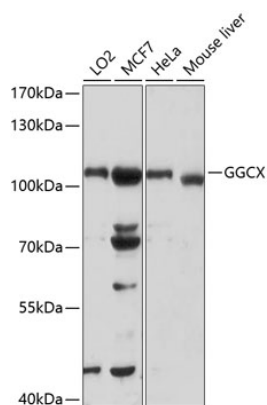
### Storage

Store at -20°C. Avoid freeze / thaw cycles.

Buffer: PBS with 0.02% sodium azide, 50% glycerol, pH 7.3.

## Validation Data

---



Western blot analysis of various lysates using GGCX Rabbit pAb (A1806) at 1:1000 dilution.  
Secondary antibody: HRP-conjugated Goat anti-Rabbit IgG (H+L) (AS014) at 1:10000 dilution.  
Lysates/proteins: 25µg per lane.  
Blocking buffer: 3% nonfat dry milk in TBST.  
Detection: ECL Basic Kit (RM00020).  
Exposure time: 90s.