

pan-methyl-Histidine Rabbit pAb

Catalog No.: A17948 **2 Publications**

Basic Information

Observed MW

10-100kDa

Calculated MW

Category

Primary antibody

Applications

WB,DB,ELISA

Cross-Reactivity

Human, Mouse, Rat

Background

Recommended Dilutions

WB 1:500 - 1:1000

DB 1:50 - 1:200

ELISA Recommended starting concentration is 1 µg/mL. Please optimize the concentration based on your specific assay requirements.

Immunogen Information

Gene ID

Swiss Prot

Immunogen

Synthetic peptide. This information is considered to be commercially sensitive.

Synonyms

Contact

☎ | 400-999-6126

✉ | cn.market@abclonal.com.cn

🌐 | www.abclonal.com.cn

Product Information

Source

Rabbit

Isotype

IgG

Purification

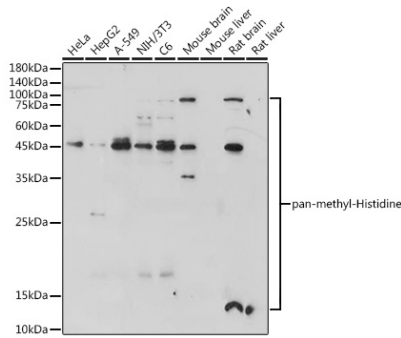
Affinity purification

Storage

Store at -20°C. Avoid freeze / thaw cycles.

Buffer: PBS with 0.01% thimerosal, 50% glycerol, pH7.3.

Validation Data



Western blot analysis of various lysates using pan-methyl-Histidine Rabbit pAb (A17948) at 1:1000 dilution.

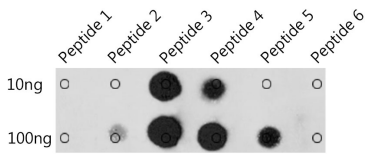
Secondary antibody: HRP-conjugated Goat anti-Rabbit IgG (H+L) (AS014) at 1:10000 dilution.

Lysates/proteins: 25µg per lane.

Blocking buffer: 3% nonfat dry milk in TBST.

Detection: ECL Enhanced Kit (RM00021).

Exposure time: 300s.



Dot-blot analysis of all sorts using pan-methyl-Histidine pAb (A17948) at 1:1000 dilution.

Peptide 1 Peptide library (3-methylhistidine-intermediate)

Peptide 2 Peptide library (3-methylhistidine-C-terminal)

Peptide 3 Peptide library (1-methylhistidine-intermediate)

Peptide 4 Peptide library (1-methylhistidine-C-terminal)

Peptide 5 Histidine methylation modified peptide library mix

Peptide 6 Control peptide library mix