

USP12 Rabbit pAb

Catalog No.: A17862 **2 Publications**

Basic Information

Observed MW

42kDa

Calculated MW

43kDa

Category

Primary antibody

Applications

WB, ELISA

Cross-Reactivity

Human, Mouse, Rat

Background

Enables cysteine-type endopeptidase activity and thiol-dependent deubiquitinase. Involved in protein deubiquitination. Predicted to be located in nucleoplasm. Predicted to be active in cytosol and nucleus.

Recommended Dilutions

WB 1:500 - 1:1000

ELISA Recommended starting concentration is 1 µg/mL. Please optimize the concentration based on your specific assay requirements.

Immunogen Information

Gene ID

219333

Swiss Prot

O75317

Immunogen

Synthetic peptide. This information is considered to be commercially sensitive.

Synonyms

UBH1; USP12L1; USP12

Contact

☎ | 400-999-6126

✉ | cn.market@abclonal.com.cn

🌐 | www.abclonal.com.cn

Product Information

Source

Rabbit

Isotype

IgG

Purification

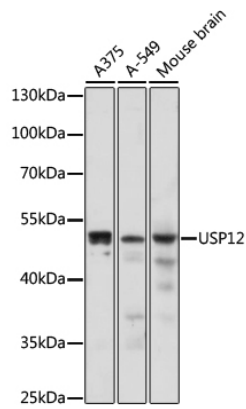
Affinity purification

Storage

Store at -20°C. Avoid freeze / thaw cycles.

Buffer: PBS with 0.01% thimerosal, 50% glycerol, pH7.3.

Validation Data



Western blot analysis of various lysates using USP12 Rabbit pAb (A17862) at 1:1000 dilution.
Secondary antibody: HRP-conjugated Goat anti-Rabbit IgG (H+L) (AS014) at 1:10000 dilution.
Lysates/proteins: 25µg per lane.
Blocking buffer: 3% nonfat dry milk in TBST.
Detection: ECL Enhanced Kit (RM00021).
Exposure time: 2min.