

APLF Rabbit pAb

Catalog No.: A17842

Basic Information

Observed MW

57kDa

Calculated MW

57kDa

Category

Primary antibody

Applications

WB, ELISA

Cross-Reactivity

Rat

Background

Enables DNA-(apurinic or apyrimidinic site) endonuclease activity; nuclease activity; and nucleotide binding activity. Involved in double-strand break repair via nonhomologous end joining and single strand break repair. Acts upstream of or within positive regulation of DNA ligation. Located in nucleoplasm. Is active in site of double-strand break.

Recommended Dilutions

WB 1:500 - 1:2000

ELISA Recommended starting concentration is 1 µg/mL. Please optimize the concentration based on your specific assay requirements.

Immunogen Information

Gene ID

200558

Swiss Prot

Q8IW19

Immunogen

Recombinant protein (or fragment). This information is considered to be commercially sensitive.

Synonyms

APFL; PALF; Xip1; ZCCHH1; C2orf13; APLF

Contact

☎ | 400-999-6126

✉ | cn.market@abclonal.com.cn

🌐 | www.abclonal.com.cn

Product Information

Source

Rabbit

Isotype

IgG

Purification

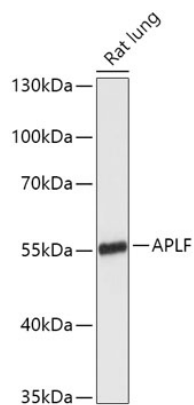
Affinity purification

Storage

Store at -20°C. Avoid freeze / thaw cycles.

Buffer: PBS with 0.01% thimerosal, 50% glycerol, pH7.3.

Validation Data



Western blot analysis of lysates from Rat lung, using APLF Rabbit pAb (A17842) at 1:1000 dilution.
Secondary antibody: HRP-conjugated Goat anti-Rabbit IgG (H+L) (AS014) at 1:10000 dilution.
Lysates/proteins: 25µg per lane.
Blocking buffer: 3% nonfat dry milk in TBST.
Detection: ECL Enhanced Kit (RM00021).
Exposure time: 3min.