

# LRRK1 Rabbit pAb

Catalog No.: A17768 **2 Publications**

## Basic Information

### Observed MW

250kDa

### Calculated MW

225kDa

### Category

Primary antibody

### Applications

WB,ELISA

### Cross-Reactivity

Human

## Background

This gene encodes a multi-domain protein that is a leucine-rich repeat kinase and a GDP/GTP binding protein. The encoded protein is thought to play a role in the regulation of bone mass. Mice lacking a similar gene showed severe osteopetrosis, increased bone mineralization and decreased bone resorption.

## Recommended Dilutions

**WB** 1:500 - 1:2000

**ELISA** Recommended starting concentration is 1 µg/mL. Please optimize the concentration based on your specific assay requirements.

## Immunogen Information

### Gene ID

79705

### Swiss Prot

Q38SD2

### Immunogen

Recombinant protein (or fragment). This information is considered to be commercially sensitive.

### Synonyms

OSMD; RIPK6; Roco1; LRRK1

## Contact

 | 400-999-6126

 | [cn.market@abclonal.com.cn](mailto:cn.market@abclonal.com.cn)

 | [www.abclonal.com.cn](http://www.abclonal.com.cn)

## Product Information

### Source

Rabbit

### Isotype

IgG

### Purification

Affinity purification

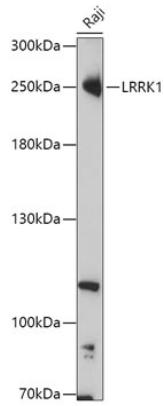
### Storage

Store at -20°C. Avoid freeze / thaw cycles.

Buffer: PBS with 0.01% thimerosal, 50% glycerol, pH7.3.

## Validation Data

---



Western blot analysis of lysates from Raji cells, using LRRK1 Rabbit pAb (A17768) at 1:1000 dilution.  
Secondary antibody: HRP-conjugated Goat anti-Rabbit IgG (H+L) (AS014) at 1:10000 dilution.  
Lysates/proteins: 25 $\mu$ g per lane.  
Blocking buffer: 3% nonfat dry milk in TBST.  
Detection: ECL Basic Kit (RM00020).  
Exposure time: 60s.