

# LPCAT3 Rabbit pAb

Catalog No.: A17604 **17 Publications**

## Basic Information

### Observed MW

56kDa

### Calculated MW

56kDa

### Category

Primary antibody

### Applications

WB,IHC-P,ELISA

### Cross-Reactivity

Human, Mouse, Rat

## Background

Enables 1-acylglycerophosphocholine O-acyltransferase activity; 1-acylglycerophosphoethanolamine O-acyltransferase activity; and 1-acylglycerophosphoserine O-acyltransferase activity. Involved in phosphatidylcholine acyl-chain remodeling; phosphatidylethanolamine acyl-chain remodeling; and phosphatidylserine acyl-chain remodeling. Located in endoplasmic reticulum membrane.

## Recommended Dilutions

**WB** 1:500 - 1:1000

**IHC-P** 1:50 - 1:200

**ELISA** Recommended starting concentration is 1 µg/mL. Please optimize the concentration based on your specific assay requirements.

## Immunogen Information

### Gene ID

10162

### Swiss Prot

Q6P1A2

### Immunogen

Recombinant protein (or fragment). This information is considered to be commercially sensitive.

### Synonyms

C3F; LPCAT; LPSAT; OACT5; nesy; MBOAT5; LPLAT 5; LPLAT12; LPCAT3

## Contact

 | 400-999-6126

 | [cn.market@abclonal.com.cn](mailto:cn.market@abclonal.com.cn)

 | [www.abclonal.com.cn](http://www.abclonal.com.cn)

## Product Information

### Source

Rabbit

### Isotype

IgG

### Purification

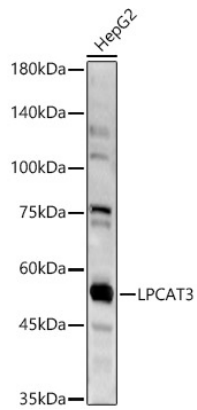
Affinity purification

### Storage

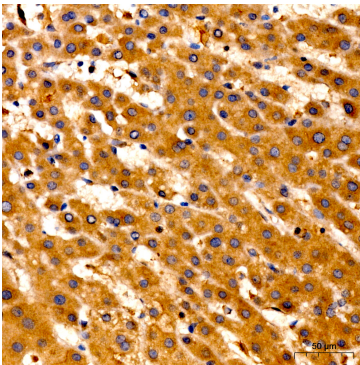
Store at -20°C. Avoid freeze / thaw cycles.

Buffer: PBS with 0.09% Sodium azide, 50% glycerol, pH7.3.

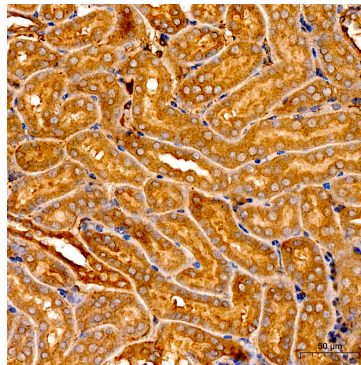
## Validation Data



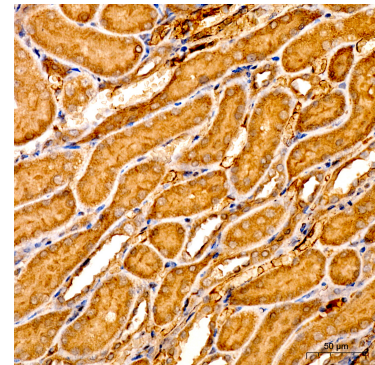
Western blot analysis of lysates from HepG2 cells, using LPCAT3 Rabbit pAb (A17604) at 1:1000 dilution. Secondary antibody: HRP-conjugated Goat anti-Rabbit IgG (H+L) (AS014) at 1:10000 dilution. Lysates/proteins: 25µg per lane. Blocking buffer: 3% nonfat dry milk in TBST. Detection: ECL Basic Kit (RM00020). Exposure time: 30s.



Immunohistochemistry analysis of paraffin-embedded Human liver tissue using LPCAT3 Rabbit pAb (A17604) at a dilution of 1:100 (40x lens). High pressure antigen retrieval was performed with 0.01 M citrate buffer (pH 6.0) prior to IHC staining.



Immunohistochemistry analysis of paraffin-embedded Mouse kidney tissue using LPCAT3 Rabbit pAb (A17604) at a dilution of 1:100 (40x lens). High pressure antigen retrieval was performed with 0.01 M citrate buffer (pH 6.0) prior to IHC staining.



Immunohistochemistry analysis of paraffin-embedded Rat kidney tissue using LPCAT3 Rabbit pAb (A17604) at a dilution of 1:100 (40x lens). High pressure antigen retrieval was performed with 0.01 M citrate buffer (pH 6.0) prior to IHC staining.