

# TIM-3/HAVCR2 Rabbit pAb

Catalog No.: A17231

## Basic Information

### Observed MW

45-70kDa

### Calculated MW

33kDa

### Category

Primary antibody

### Applications

ELISA, WB

### Cross-Reactivity

Human, Mouse, Rat

## Background

The protein encoded by this gene belongs to the immunoglobulin superfamily, and TIM family of proteins. CD4-positive T helper lymphocytes can be divided into types 1 (Th1) and 2 (Th2) on the basis of their cytokine secretion patterns. Th1 cells are involved in cell-mediated immunity to intracellular pathogens and delayed-type hypersensitivity reactions, whereas, Th2 cells are involved in the control of extracellular helminthic infections and the promotion of atopic and allergic diseases. This protein is a Th1-specific cell surface protein that regulates macrophage activation, and inhibits Th1-mediated auto- and alloimmune responses, and promotes immunological tolerance.

## Recommended Dilutions

WB 1:500 - 1:2000

## Immunogen Information

### Gene ID

84868

### Swiss Prot

Q8TDQ0

### Immunogen

Recombinant fusion protein containing a sequence corresponding to amino acids 22-202 of human TIM-3/HAVCR2 (NP\_116171.3).

### Synonyms

TIM3; CD366; KIM-3; SPTCL; TIMD3; Tim-3; TIMD-3; HAVcr-2; TIM-3/HAVCR2

## Contact

☎ | 400-999-6126

✉ | [cn.market@abclonal.com.cn](mailto:cn.market@abclonal.com.cn)

🌐 | [www.abclonal.com.cn](http://www.abclonal.com.cn)

## Product Information

### Source

Rabbit

### Isotype

IgG

### Purification

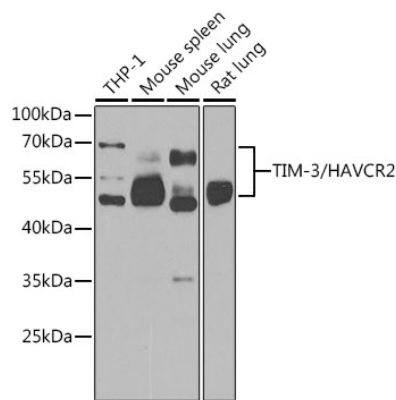
Affinity purification

### Storage

Store at -20°C. Avoid freeze / thaw cycles.

Buffer: PBS with 0.02% sodium azide, 50% glycerol, pH7.3.

Validation Data



Western blot analysis of various lysates using TIM-3/HAVCR2 Rabbit pAb (A17231) at 1:1000 dilution.  
Secondary antibody: HRP Goat Anti-Rabbit IgG (H+L) (AS014) at 1:10000 dilution.  
Lysates/proteins: 25µg per lane.  
Blocking buffer: 3% nonfat dry milk in TBST.  
Detection: ECL Basic Kit (RM00020).  
Exposure time: 30s.