

# ARIH1 Rabbit pAb

Catalog No.: A17123 **3 Publications**

## Basic Information

### Observed MW

64kDa

### Calculated MW

64kDa

### Category

Primary antibody

### Applications

WB, ELISA

### Cross-Reactivity

Human, Mouse, Rat

## Background

Enables enzyme binding activity; ubiquitin-protein transferase activity; and zinc ion binding activity. Involved in protein ubiquitination. Located in Lewy body; cytoplasm; and nuclear body. Colocalizes with cullin-RING ubiquitin ligase complex.

## Recommended Dilutions

**WB** 1:500 - 1:1000

**ELISA** Recommended starting concentration is 1 µg/mL. Please optimize the concentration based on your specific assay requirements.

## Immunogen Information

### Gene ID

25820

### Swiss Prot

Q9Y4X5

### Immunogen

Synthetic peptide. This information is considered to be commercially sensitive.

### Synonyms

ARI; HARI; HHARI; UBCH7BP; ARIH1

## Contact

 | 400-999-6126

 | [cn.market@abclonal.com.cn](mailto:cn.market@abclonal.com.cn)

 | [www.abclonal.com.cn](http://www.abclonal.com.cn)

## Product Information

### Source

Rabbit

### Isotype

IgG

### Purification

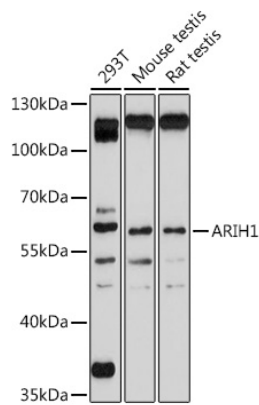
Affinity purification

### Storage

Store at -20°C. Avoid freeze / thaw cycles.

Buffer: PBS with 0.01% thimerosal, 50% glycerol, pH 7.3.

Validation Data



Western blot analysis of various lysates using ARIH1 Rabbit pAb (A17123) at 1:1000 dilution.  
Secondary antibody: HRP-conjugated Goat anti-Rabbit IgG (H+L) (AS014) at 1:10000 dilution.  
Lysates/proteins: 25µg per lane.  
Blocking buffer: 3% nonfat dry milk in TBST.  
Detection: ECL Basic Kit (RM00020).  
Exposure time: 90s.