

PGC1 alpha Rabbit pAb

Catalog No.: A17089

4 Publications

Basic Information

Observed MW

100kDa

Calculated MW

91kDa

Category

Primary antibody

Applications

WB, ELISA

Cross-Reactivity

Human, Mouse, Rat

Background

This gene encodes a transcriptional coactivator that induces and coordinates gene expression regulating mitochondrial biogenesis, respiration, hepatic gluconeogenesis, thermogenic program in brown fat and muscle fiber-type switching. Mice lacking the encoded protein exhibit reduced thermogenic capacity, hyperactivity and resistance to diet-induced obesity. Mice lacking the encoded protein specifically in the heart exhibit peripartum cardiomyopathy. Alternative splicing results in multiple transcript variants.

Recommended Dilutions

WB 1:500 - 1:1000

ELISA Recommended starting concentration is 1 µg/mL. Please optimize the concentration based on your specific assay requirements.

Immunogen Information

Gene ID

19017

Swiss Prot

O70343

Immunogen

Recombinant protein (or fragment). This information is considered to be commercially sensitive.

Synonyms

Pgc1; PGC-1; Pgco1; Gm11133; Ppargc1; Pgc-1alpha; A830037N07Rik; PPARGC-1-alpha; PGC1 alpha

Contact

☎ | 400-999-6126

✉ | cn.market@abclonal.com.cn

🌐 | www.abclonal.com.cn

Product Information

Source

Rabbit

Isotype

IgG

Purification

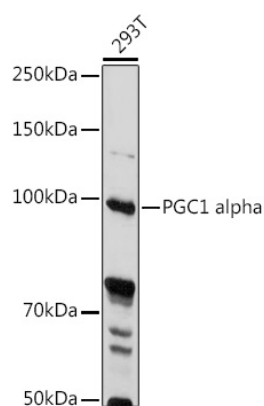
Affinity purification

Storage

Store at -20°C. Avoid freeze / thaw cycles.

Buffer: PBS with 0.02% sodium azide, 50% glycerol, pH7.3.

Validation Data



Western blot analysis of lysates from 293T cells, using PGC1 alpha Rabbit pAb (A17089) at 1:1000 dilution.

Secondary antibody: HRP-conjugated Goat anti-Rabbit IgG (H+L) (AS014) at 1:10000 dilution.

Lysates/proteins: 25µg per lane.

Blocking buffer: 3% nonfat dry milk in TBST.

Detection: ECL Basic Kit (RM00020).

Exposure time: 10s.