

# Lamin B1 Rabbit pAb

Catalog No.: A16910 **2 Publications**

## Basic Information

### Observed MW

68kDa

### Calculated MW

66kDa

### Category

Primary antibody

### Applications

WB, IHC-P, IF/ICC, IP, ELISA, ChIP

### Cross-Reactivity

Human, Mouse, Rat

## Background

This gene encodes one of the two B-type lamin proteins and is a component of the nuclear lamina. A duplication of this gene is associated with autosomal dominant adult-onset leukodystrophy (ADLD). Alternative splicing results in multiple transcript variants.

## Recommended Dilutions

<b>WB</b>	1:500 - 1:2000
<b>IHC-P</b>	1:50 - 1:200
<b>IF/ICC</b>	1:50 - 1:200
<b>IP</b>	0.5µg-4µg antibody for 200µg-400µg extracts of whole cells
<b>ELISA</b>	Recommended starting concentration is 1 µg/mL. Please optimize the concentration based on your specific assay requirements.
<b>ChIP</b>	5µg antibody for 5µg-10µg of Chromatin

## Immunogen Information

### Gene ID

4001

### Swiss Prot

P20700

### Immunogen

Recombinant protein (or fragment). This information is considered to be commercially sensitive.

### Synonyms

LMN; ADLD; LMN2; LMNB; MCPH26; Lamin B1

## Product Information

### Source

Rabbit

### Isotype

IgG

### Purification

Affinity purification

### Storage

Store at -20°C. Avoid freeze / thaw cycles.

Buffer: PBS with 0.01% thimerosal, 50% glycerol, pH7.3.

Contact

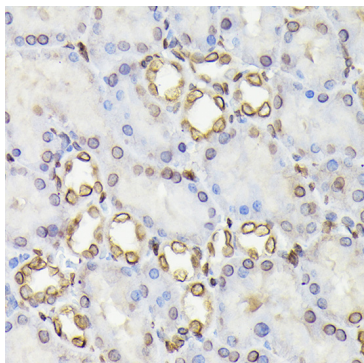
---

☎ | 400-999-6126

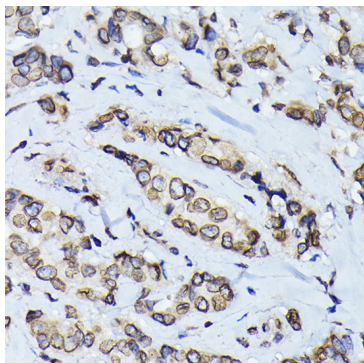
✉ | [cn.market@abclonal.com.cn](mailto:cn.market@abclonal.com.cn)

🌐 | [www.abclonal.com.cn](http://www.abclonal.com.cn)

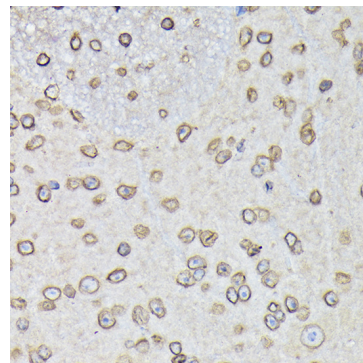
---



Immunohistochemistry analysis of paraffin-embedded Rat kidney using Lamin B1 Rabbit pAb (A16910) at dilution of 1:100 (40x lens). Microwave antigen retrieval performed with 0.01M Tris/EDTA Buffer (pH 9.0) prior to IHC staining.



Immunohistochemistry analysis of paraffin-embedded Human breast cancer using Lamin B1 Rabbit pAb (A16910) at dilution of 1:100 (40x lens). Microwave antigen retrieval performed with 0.01M Tris/EDTA Buffer (pH 9.0) prior to IHC staining.



Immunohistochemistry analysis of paraffin-embedded Mouse spinal cord using Lamin B1 Rabbit pAb (A16910) at dilution of 1:100 (40x lens). Microwave antigen retrieval performed with 0.01M Tris/EDTA Buffer (pH 9.0) prior to IHC staining.