

[KO Validated] TOM20 Rabbit pAb

Catalog No.: A16896 **KO** **Validated** **3 Publications**

Basic Information

Observed MW

16kDa

Calculated MW

16kDa

Category

Primary antibody

Applications

ELISA, WB, IHC-P, IF/ICC

Cross-Reactivity

Human, Mouse, Rat

Background

Enables protein-transporting ATPase activity and unfolded protein binding activity. Involved in protein targeting to mitochondrion. Located in mitochondria-associated endoplasmic reticulum membrane and mitochondrial outer membrane.

Recommended Dilutions

WB	1:500 - 1:1000
IHC-P	1:50 - 1:200
IF/ICC	1:50 - 1:200

Immunogen Information

Gene ID

9804

Swiss Prot

Q15388

Immunogen

Recombinant fusion protein containing a sequence corresponding to amino acids 20-145 of human TOM20 (NP_055580.1).

Synonyms

MAS20; MOM19; TOM20; 20

Contact

	400-999-6126
	cn.market@abclonal.com.cn
	www.abclonal.com.cn

Product Information

Source

Rabbit

Isotype

IgG

Purification

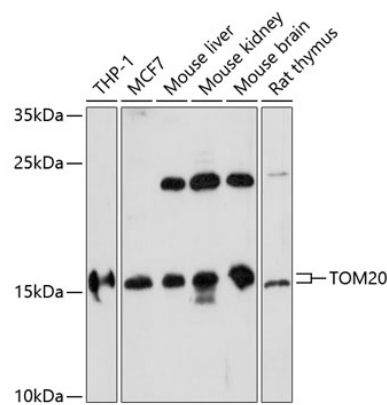
Affinity purification

Storage

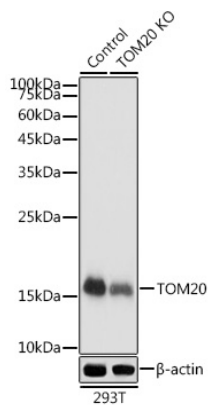
Store at -20°C. Avoid freeze / thaw cycles.

Buffer: PBS with 0.01% thimerosal, 50% glycerol, pH7.3.

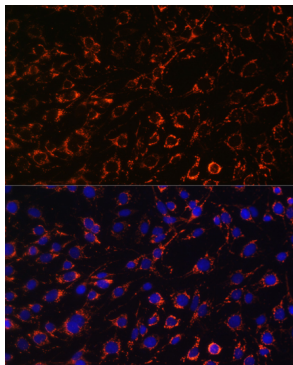
Validation Data



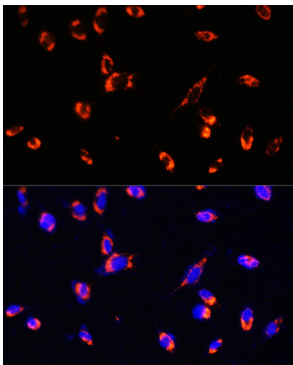
Western blot analysis of various lysates using [KO Validated] TOM20 Rabbit pAb (A16896) at 1:1000 dilution.
Secondary antibody: HRP Goat Anti-Rabbit IgG (H+L) (AS014) at 1:10000 dilution.
Lysates/proteins: 25µg per lane.
Blocking buffer: 3% nonfat dry milk in TBST.
Detection: ECL Basic Kit (RM00020).
Exposure time: 5min.



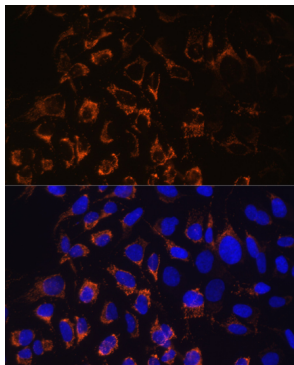
Western blot analysis of lysates from wild type (WT) and TOM20 knockout (KO) 293T cells, using [KO Validated] TOM20 Rabbit pAb (A16896) at 1:1000 dilution.
Secondary antibody: HRP Goat Anti-Rabbit IgG (H+L) (AS014) at 1:10000 dilution.
Lysates/proteins: 25µg per lane.
Blocking buffer: 3% nonfat dry milk in TBST.
Detection: ECL Basic Kit (RM00020).
Exposure time: 1s.



Immunofluorescence analysis of C6 cells using [KO Validated] TOM20 Rabbit pAb (A16896) at dilution of 1:100. Blue: DAPI for nuclear staining.

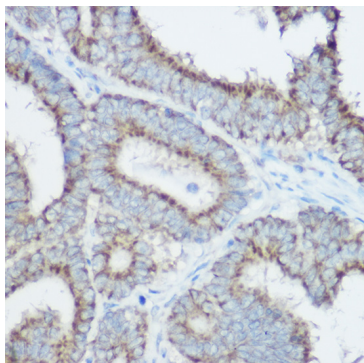


Immunofluorescence analysis of NIH/3T3 cells using [KO Validated] TOM20 Rabbit pAb (A16896) at dilution of 1:100. Blue: DAPI for nuclear staining.

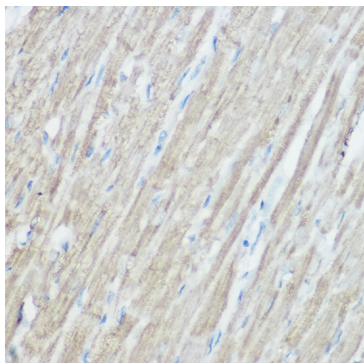


Immunofluorescence analysis of U2OS cells using [KO Validated] TOM20 Rabbit pAb (A16896) at dilution of 1:100. Blue: DAPI for nuclear staining.

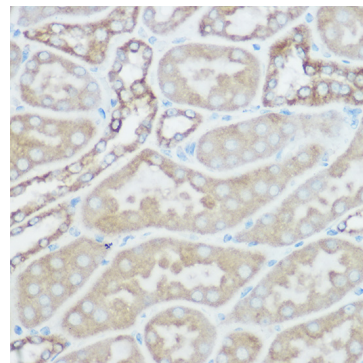
Validation Data



Immunohistochemistry analysis of paraffin-embedded human colon carcinoma using [KO Validated] TOM20 Rabbit pAb (A16896) at dilution of 1:100 (40x lens). Perform high pressure antigen retrieval with 10 mM citrate buffer pH 6.0 before commencing with IHC staining protocol.



Immunohistochemistry analysis of paraffin-embedded mouse heart using [KO Validated] TOM20 Rabbit pAb (A16896) at dilution of 1:100 (40x lens). Perform high pressure antigen retrieval with 10 mM citrate buffer pH 6.0 before commencing with IHC staining protocol.



Immunohistochemistry analysis of paraffin-embedded rat kidney using [KO Validated] TOM20 Rabbit pAb (A16896) at dilution of 1:100 (40x lens). Perform high pressure antigen retrieval with 10 mM citrate buffer pH 6.0 before commencing with IHC staining protocol.