

IFNA10 Rabbit pAb

Catalog No.: A16880

Basic Information

Observed MW

25kDa

Calculated MW

22kDa

Category

Primary antibody

Applications

WB, ELISA

Cross-Reactivity

Rat

Background

This gene encodes a protein that belongs to the type I interferon family of proteins, and is located in a cluster of alpha interferon genes on chromosome 9. Interferons are small regulatory molecules that function in cell signaling in response to viruses and other pathogens or tumor cells. This gene is intronless and the encoded protein is secreted.

Recommended Dilutions

WB 1:500 - 1:2000

ELISA Recommended starting concentration is 1 µg/mL. Please optimize the concentration based on your specific assay requirements.

Immunogen Information

Gene ID

3446

Swiss Prot

P01566

Immunogen

Recombinant protein (or fragment). This information is considered to be commercially sensitive.

Synonyms

IFN-alphaC; IFNA10

Contact

☎ | 400-999-6126

✉ | cn.market@abclonal.com.cn

🌐 | www.abclonal.com.cn

Product Information

Source

Rabbit

Isotype

IgG

Purification

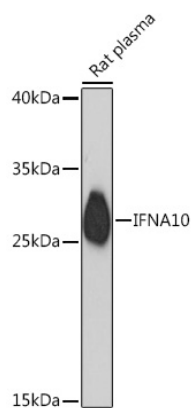
Affinity purification

Storage

Store at -20°C. Avoid freeze / thaw cycles.

Buffer: PBS with 0.01% thimerosal, 50% glycerol, pH7.3.

Validation Data



Western blot analysis of lysates from Rat plasma, using IFNA10 Rabbit pAb (A16880) at 1:1000 dilution.
Secondary antibody: HRP-conjugated Goat anti-Rabbit IgG (H+L) (AS014) at 1:10000 dilution.
Lysates/proteins: 25µg per lane.
Blocking buffer: 3% nonfat dry milk in TBST.
Detection: ECL Basic Kit (RM00020).
Exposure time: 90s.