

GSK3 β Rabbit pAb

Catalog No.: A16868

6 Publications

Basic Information

Observed MW

48kDa/47kDa

Calculated MW

47kDa

Category

Primary antibody

Applications

ELISA, WB, IP

Cross-Reactivity

Human, Mouse, Rat

Background

The protein encoded by this gene is a serine-threonine kinase belonging to the glycogen synthase kinase subfamily. It is a negative regulator of glucose homeostasis and is involved in energy metabolism, inflammation, ER-stress, mitochondrial dysfunction, and apoptotic pathways. Defects in this gene have been associated with Parkinson disease and Alzheimer disease.

Recommended Dilutions

WB 1:500 - 1:2000

IP 0.5 μ g-4 μ g antibody for
200 μ g-400 μ g extracts of
whole cells

Immunogen Information

Gene ID

2932

Swiss Prot

P49841

Immunogen

Recombinant fusion protein containing a sequence corresponding to amino acids 350-420 of GSK3 β (NP_001139628.1).

Synonyms

GSK3B; gsk-3 β ; GSK3 β

Contact

☎ | 400-999-6126

✉ | cn.market@abclonal.com.cn

🌐 | www.abclonal.com.cn

Product Information

Source

Rabbit

Isotype

IgG

Purification

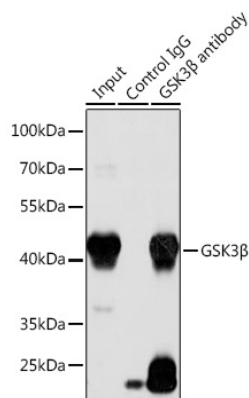
Affinity purification

Storage

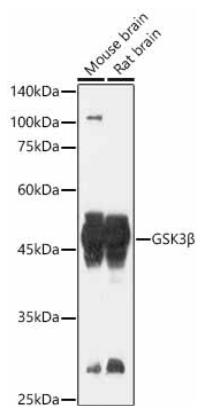
Store at -20°C. Avoid freeze / thaw cycles.

Buffer: PBS with 0.01% thimerosal, 50% glycerol, pH7.3.

Validation Data



Immunoprecipitation analysis of 200 µg extracts of LO2 cells using 3 µg GSK3β antibody (A16868). Western blot was performed from the immunoprecipitate using GSK3β antibody (A16868) at a dilution of 1:1000.



Western blot analysis of various lysates using GSK3β Rabbit pAb (A16868) at 1:1000 dilution. Secondary antibody: HRP Goat Anti-Rabbit IgG (H+L) (AS014) at 1:10000 dilution. Lysates / proteins: 25 µg per lane. Blocking buffer: 3 % nonfat dry milk in TBST. Detection: ECL Enhanced Kit (RM00021). Exposure time: 180s.