

ERK1 / ERK2 Rabbit pAb

Catalog No.: A16686

85 Publications

Basic Information

Observed MW

42kDa/44kDa

Calculated MW

36kDa/41kDa/38kDa/40kDa/43kDa

Category

Primary antibody

Applications

WB, IF/ICC, IHC-P, ELISA

Cross-Reactivity

Human, Mouse, Rat

Background

MAP kinases, also known as extracellular signal-regulated kinases (ERKs), act as an integration point for multiple biochemical signals, and are involved in a wide variety of cellular processes such as proliferation, differentiation, transcription regulation and development. The activation of this kinase requires its phosphorylation by upstream kinases. Upon activation, this kinase translocates to the nucleus of the stimulated cells, where it phosphorylates nuclear targets.

Recommended Dilutions

WB 1:500 - 1:5000**IF/ICC** 1:50 - 1:200**IHC-P** 1:50 - 1:200

ELISA Recommended starting concentration is 1 µg/mL. Please optimize the concentration based on your specific assay requirements.

Immunogen Information

Gene ID

5594/5595

Swiss Prot

P28482/P27361

Immunogen

Synthetic peptide. This information is considered to be commercially sensitive.

Synonyms

MAPK1/MAPK3; ERK1 / ERK2

Contact

 400-999-6126 cn.market@abclonal.com.cn www.abclonal.com.cn

Product Information

Source

Rabbit

Isotype

IgG

Purification

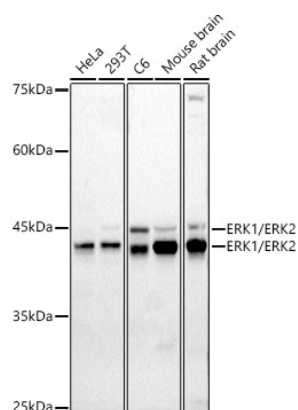
Affinity purification

Storage

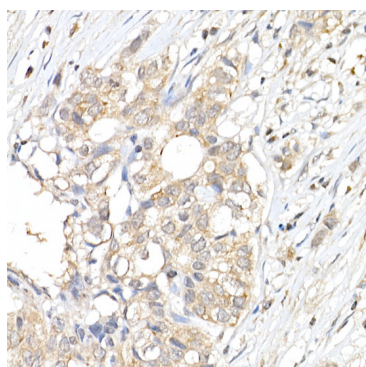
Store at -20°C. Avoid freeze / thaw cycles.

Buffer: PBS containing 50% glycerol, preserved with proclin300 or sodium azide (as specified on the Certificate of Analysis), pH 7.3.

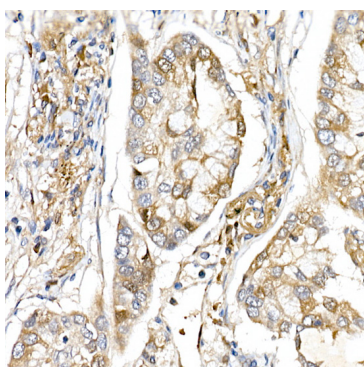
Validation Data



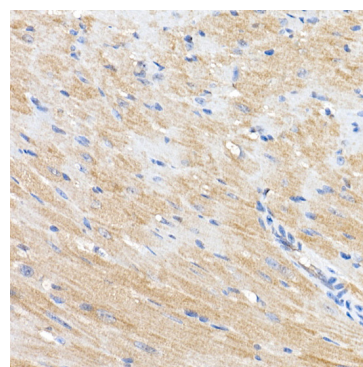
Western blot analysis of various lysates using ERK1 / ERK2 Rabbit pAb (A16686) at 1:1000 dilution. Secondary antibody: HRP-conjugated Goat anti-Rabbit IgG (H+L) (AS014) at 1:10000 dilution. Lysates/proteins: 25µg per lane. Blocking buffer: 3% nonfat dry milk in TBST. Detection: ECL Basic Kit (RM00020). Exposure time: 90s.



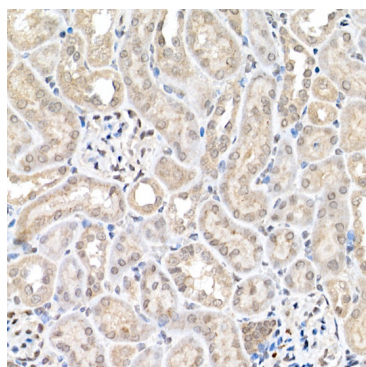
Immunohistochemistry analysis of paraffin-embedded Human breast cancer using ERK1 / ERK2 Rabbit pAb (A16686) at dilution of 1:50 (40x lens). High pressure antigen retrieval performed with 0.01M Citrate buffer (pH 6.0) prior to IHC staining.



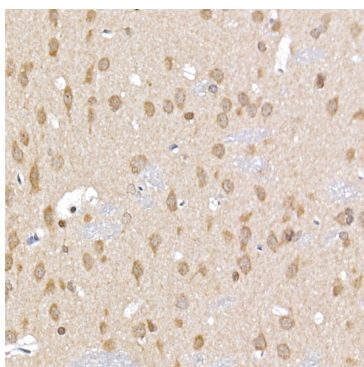
Immunohistochemistry analysis of paraffin-embedded Human lung cancer using ERK1 / ERK2 Rabbit pAb (A16686) at dilution of 1:50 (40x lens). High pressure antigen retrieval performed with 0.01M Citrate buffer (pH 6.0) prior to IHC staining.



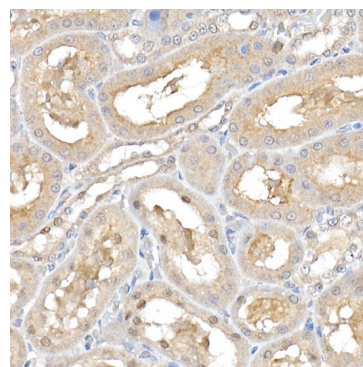
Immunohistochemistry analysis of paraffin-embedded Mouse heart using ERK1 / ERK2 Rabbit pAb (A16686) at dilution of 1:50 (40x lens). High pressure antigen retrieval performed with 0.01M Citrate buffer (pH 6.0) prior to IHC staining.



Immunohistochemistry analysis of paraffin-embedded Mouse kidney using ERK1 / ERK2 Rabbit pAb (A16686) at dilution of 1:50 (40x lens). High pressure antigen retrieval performed with 0.01M Citrate buffer (pH 6.0) prior to IHC staining.

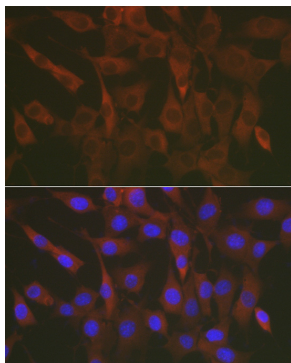


Immunohistochemistry analysis of paraffin-embedded Rat brain using ERK1 / ERK2 Rabbit pAb (A16686) at dilution of 1:50 (40x lens). High pressure antigen retrieval performed with 0.01M Citrate buffer (pH 6.0) prior to IHC staining.



Immunohistochemistry analysis of paraffin-embedded Rat kidney using ERK1 / ERK2 Rabbit pAb (A16686) at dilution of 1:50 (40x lens). High pressure antigen retrieval performed with 0.01M Citrate buffer (pH 6.0) prior to IHC staining.

Validation Data



Immunofluorescence analysis of NIH/3T3 cells using ERK1 / ERK2 Rabbit pAb (A16686) at dilution of 1:50 (40x lens). Secondary antibody: Cy3-conjugated Goat anti-Rabbit IgG (H+L) (AS007) at 1:500 dilution. Blue: DAPI for nuclear staining.