

Lamin B1 Rabbit pAb

Catalog No.: A16685 **2 Publications**

Basic Information

Observed MW

70kDa

Calculated MW

66kDa

Category

Primary antibody

Applications

WB,IF/ICC,IP,ELISA

Cross-Reactivity

Human, Mouse, Rat

Background

This gene encodes one of the two B-type lamin proteins and is a component of the nuclear lamina. A duplication of this gene is associated with autosomal dominant adult-onset leukodystrophy (ADLD). Alternative splicing results in multiple transcript variants.

Recommended Dilutions

WB 1:500 - 1:2000

IF/ICC 1:50 - 1:200

IP 0.5µg-4µg antibody for
200µg-400µg extracts of
whole cells

ELISA Recommended starting
concentration is 1 µg/mL.
Please optimize the
concentration based on
your specific assay
requirements.

Immunogen Information

Gene ID

4001

Swiss Prot

P20700

Immunogen

Synthetic peptide. This information is considered to be commercially sensitive.

Synonyms

LMN; ADLD; LMN2; LMNB; MCPH26; Lamin B1

Contact

☎ | 400-999-6126

✉ | cn.market@abclonal.com.cn

🌐 | www.abclonal.com.cn

Product Information

Source

Rabbit

Isotype

IgG

Purification

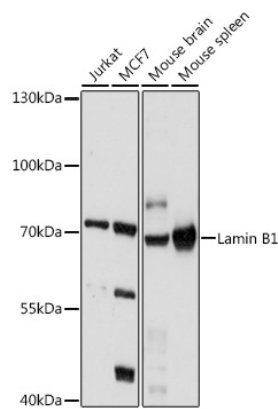
Affinity purification

Storage

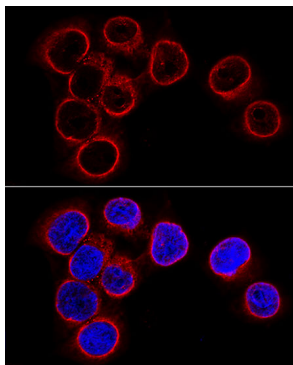
Store at -20°C. Avoid freeze / thaw cycles.

Buffer: PBS with 0.05% proclin300,50% glycerol,pH7.3.

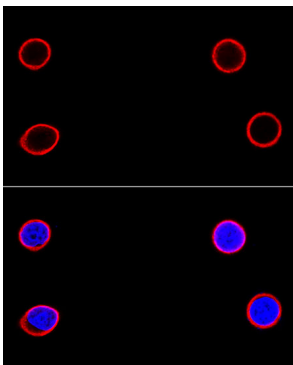
Validation Data



Western blot analysis of various lysates using Lamin B1 Rabbit pAb (A16685) at 1:1000 dilution.
Secondary antibody: HRP-conjugated Goat anti-Rabbit IgG (H+L) (AS014) at 1:10000 dilution.
Lysates/proteins: 25µg per lane.
Blocking buffer: 3% nonfat dry milk in TBST.
Detection: ECL Basic Kit (RM00020).
Exposure time: 10s.



Confocal immunofluorescence analysis of HeLa cells using Lamin B1 Rabbit pAb (A16685) at dilution of 1:100 (60x lens).
Blue: DAPI for nuclear staining.



Confocal immunofluorescence analysis of MCF-7 cells using Lamin B1 Rabbit pAb (A16685) at dilution of 1:100 (60x lens).
Blue: DAPI for nuclear staining.