

# ASC/TMS1 Rabbit pAb

Catalog No.: A16672 **24 Publications**

## Basic Information

**Observed MW**

22kDa

**Calculated MW**

22kDa

**Category**

Primary antibody

**Applications**

ELISA, WB, IHC-P, IF/ICC, IP

**Cross-Reactivity**

Human, Mouse, Rat

## Background

This gene encodes an adaptor protein that is composed of two protein-protein interaction domains: a N-terminal PYRIN-PAAD-DAPIN domain (PYD) and a C-terminal caspase-recruitment domain (CARD). The PYD and CARD domains are members of the six-helix bundle death domain-fold superfamily that mediates assembly of large signaling complexes in the inflammatory and apoptotic signaling pathways via the activation of caspase. In normal cells, this protein is localized to the cytoplasm; however, in cells undergoing apoptosis, it forms ball-like aggregates near the nuclear periphery. Two transcript variants encoding different isoforms have been found for this gene.

## Recommended Dilutions

**WB** 1:500 - 1:2000**IHC-P** 1:50 - 1:200**IF/ICC** 1:50 - 1:200**IP** 0.5µg-4µg antibody for  
400µg-600µg extracts of  
whole cells

## Immunogen Information

**Gene ID**

29108

**Swiss Prot**

Q9ULZ3

**Immunogen**

Recombinant fusion protein containing a sequence corresponding to amino acids 1-91 of human ASC/TMS1 (NP\_037390.2).

**Synonyms**

ASC; TMS; TMS1; CARD5; TMS-1; ASC/TMS1

## Contact

 | 400-999-6126 | [cn.market@abclonal.com.cn](mailto:cn.market@abclonal.com.cn) | [www.abclonal.com.cn](http://www.abclonal.com.cn)

## Product Information

**Source**

Rabbit

**Isotype**

IgG

**Purification**

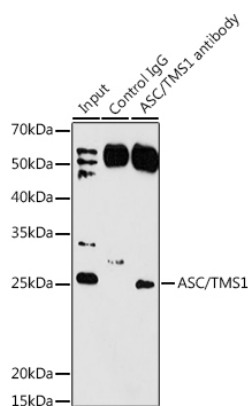
Affinity purification

**Storage**

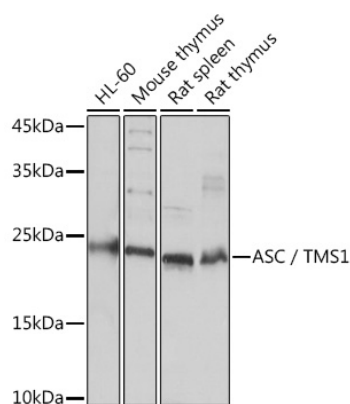
Store at -20°C. Avoid freeze / thaw cycles.

Buffer: PBS with 0.01% thimerosal, 50% glycerol, pH7.3.

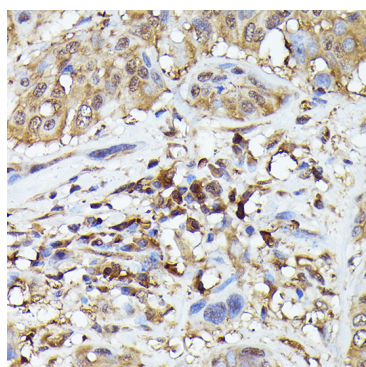
## Validation Data



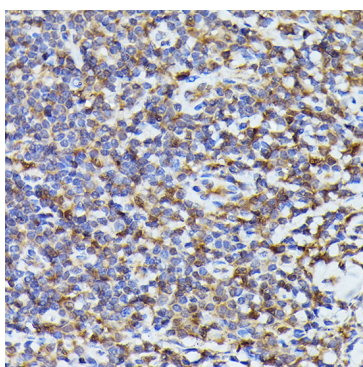
Immunoprecipitation analysis of 200 µg extracts of Rat lung using 3 µg ASC/TMS1 antibody (A16672). Western blot was performed from the immunoprecipitate using ASC/TMS1 antibody (A16672) at a dilution of 1:1000.



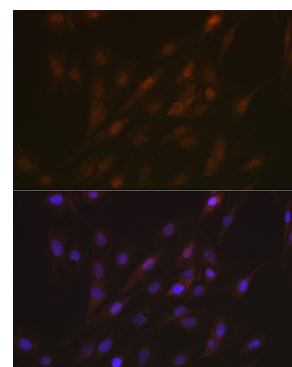
Western blot analysis of various lysates using ASC/TMS1 Rabbit pAb (A16672) at 1:3000 dilution. Secondary antibody: HRP Goat Anti-Rabbit IgG (H+L) (AS014) at 1:10000 dilution. Lysates/proteins: 25µg per lane. Blocking buffer: 3% nonfat dry milk in TBST. Detection: ECL Basic Kit (RM00020). Exposure time: 10s.



Immunohistochemistry analysis of ASC/TMS1 in paraffin-embedded human esophageal cancer using ASC/TMS1 Rabbit pAb (A16672) at dilution of 1:200 (40x lens). Perform high pressure antigen retrieval with 10 mM citrate buffer pH 6.0 before commencing with IHC staining protocol.



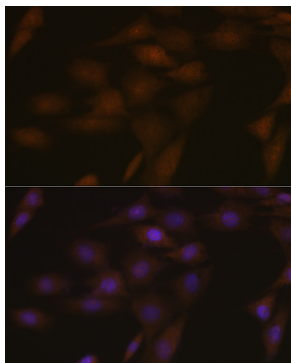
Immunohistochemistry analysis of ASC/TMS1 in paraffin-embedded human tonsil using ASC/TMS1 Rabbit pAb (A16672) at dilution of 1:200 (40x lens). Perform high pressure antigen retrieval with 10 mM citrate buffer pH 6.0 before commencing with IHC staining protocol.



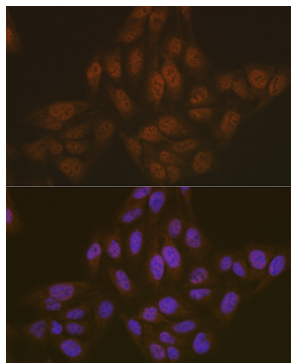
Immunofluorescence analysis of C6 cells using ASC/TMS1 Rabbit pAb (A16672) at dilution of 1:100 (40x lens). Secondary antibody: Cy3 Goat Anti-Rabbit IgG (H+L) (AS007) at 1:500 dilution. Blue: DAPI for nuclear staining.

## Validation Data

---



Immunofluorescence analysis of NIH-3T3 cells using ASC/TMS1 Rabbit pAb (A16672) at dilution of 1:100 (40x lens). Secondary antibody: Cy3 Goat Anti-Rabbit IgG (H+L) (AS007) at 1:500 dilution. Blue: DAPI for nuclear staining.



Immunofluorescence analysis of U-2 OS cells using ASC/TMS1 Rabbit pAb (A16672) at dilution of 1:100 (40x lens). Secondary antibody: Cy3 Goat Anti-Rabbit IgG (H+L) (AS007) at 1:500 dilution. Blue: DAPI for nuclear staining.