

EFS Rabbit pAb

Catalog No.: A16479

Basic Information

Observed MW

75kDa

Calculated MW

59kDa

Category

Primary antibody

Applications

WB,ELISA

Cross-Reactivity

Mouse

Background

The protein encoded by this gene is a member of the CAS (CRK-associated substrate) family of adaptor proteins which typically serve as scaffolds for the assembly of larger signaling complexes. These complexes form at the cell surface where integrin binding leads to the subsequent phosphorylation of a CAS protein. Additional binding of SRC family kinases leads to CAS hyperphosphorylation and the creation of binding sites for CRK and other proteins that cause actin cytoskeleton reorganization. This gene plays a role in integrin-mediated cell attachment, spreading, and migration and also plays a role in both normal and malignant cellular transformation. This broadly expressed gene has been shown to play a role in neurite outgrowth and its expression in the thymus and lymphocytes is important for T cell maturation and the development of immunological self-tolerance. Alternative splicing of this gene results in multiple transcript variants encoding distinct isoforms.

Recommended Dilutions

WB 1:500 - 1:2000

ELISA Recommended starting concentration is 1 µg/mL. Please optimize the concentration based on your specific assay requirements.

Immunogen Information

Gene ID

10278

Swiss Prot

O43281

Immunogen

Recombinant protein (or fragment). This information is considered to be commercially sensitive.

Synonyms

SIN; CAS3; EFS1; EFS2; HEFS; CASS3; EFS

Contact

 | 400-999-6126

 | cn.market@abclonal.com.cn

 | www.abclonal.com.cn

Product Information

Source

Rabbit

Isotype

IgG

Purification

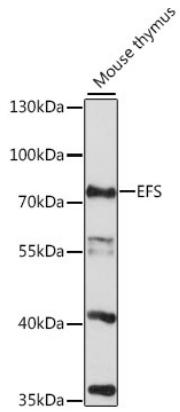
Affinity purification

Storage

Store at -20°C. Avoid freeze / thaw cycles.

Buffer: PBS with 0.01% thimerosal, 50% glycerol, pH7.3.

Validation Data



Western blot analysis of lysates from mouse thymus, using EFS Rabbit pAb (A16479) at 1:1000 dilution.
Secondary antibody: HRP-conjugated Goat anti-Rabbit IgG (H+L) (AS014) at 1:10000 dilution.
Lysates/proteins: 25 μ g per lane.
Blocking buffer: 3% nonfat dry milk in TBST.
Detection: ECL Basic Kit (RM00020).
Exposure time: 90s.