

CD11a/LFA-1A/ITGAL Rabbit pAb

Catalog No.: A1644

2 Publications

Basic Information

Observed MW

180kDa

Calculated MW

129kDa

Category

Primary antibody

Applications

WB, IF/ICC, IF-P, IHC-P, ELISA

Cross-Reactivity

Human, Mouse, Rat

Background

ITGAL encodes the integrin alpha L chain. Integrins are heterodimeric integral membrane proteins composed of an alpha chain and a beta chain. This I-domain containing alpha integrin combines with the beta 2 chain (ITGB2) to form the integrin lymphocyte function-associated antigen-1 (LFA-1), which is expressed on all leukocytes. LFA-1 plays a central role in leukocyte intercellular adhesion through interactions with its ligands, ICAMs 1-3 (intercellular adhesion molecules 1 through 3), and also functions in lymphocyte costimulatory signaling. Two transcript variants encoding different isoforms have been found for this gene.

Recommended Dilutions

WB 1:100 - 1:500**IF/ICC** 1:50 - 1:100**IF-P** 1:50 - 1:100**IHC-P** 1:50 - 1:100

ELISA Recommended starting concentration is 1 µg/mL. Please optimize the concentration based on your specific assay requirements.

Immunogen Information

Gene ID

3683

Swiss Prot

P20701



Immunogen

Recombinant protein (or fragment). This information is considered to be commercially sensitive.

Synonyms

CD11A; LFA-1; LFA1A; CD11a/LFA-1A/ITGAL

Contact

 | 400-999-6126 | cn.market@abclonal.com.cn | www.abclonal.com.cn

Product Information

Source

Rabbit

Isotype

IgG

Purification

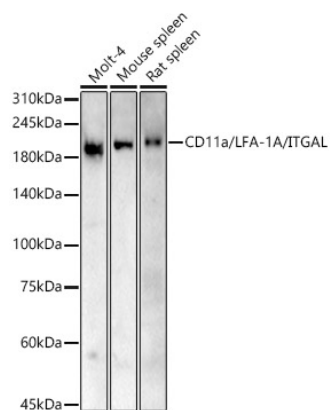
Affinity purification

Storage

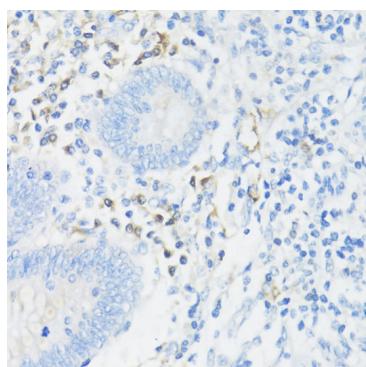
Store at -20°C. Avoid freeze / thaw cycles.

Buffer: PBS containing 50% glycerol, preserved with proclin300 or sodium azide (as specified on the Certificate of Analysis), pH 7.3.

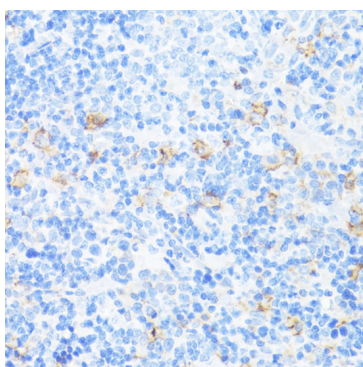
Validation Data



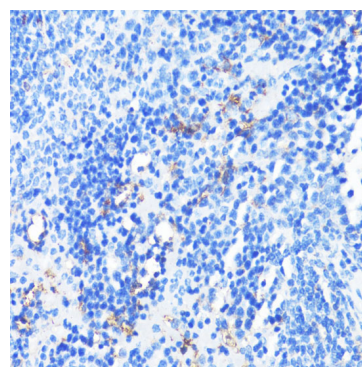
Western blot analysis of various lysates, using CD11a/LFA-1A/ITGAL Rabbit pAb (A1644) at 1:500 dilution. Secondary antibody: HRP-conjugated Goat anti-Rabbit IgG (H+L) (AS014) at 1:10000 dilution. Lysates/proteins: 25µg per lane. Blocking buffer: 3% nonfat dry milk in TBST. Detection: ECL Basic Kit (RM00020). Exposure time: 180s.



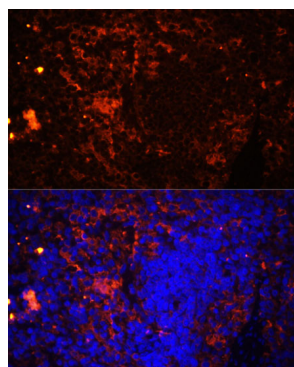
Immunohistochemistry analysis of paraffin-embedded Human appendix using CD11a/LFA-1A/ITGAL Rabbit pAb (A1644) at dilution of 1:100 (40x lens). Microwave antigen retrieval performed with 0.01M PBS Buffer (pH 7.2) prior to IHC staining.



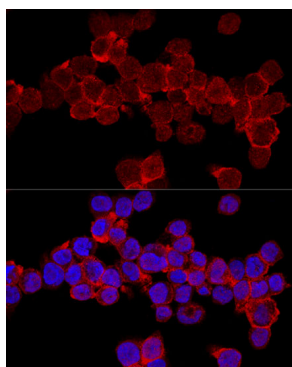
Immunohistochemistry analysis of paraffin-embedded Rat spleen using CD11a/LFA-1A/ITGAL Rabbit pAb (A1644) at dilution of 1:100 (40x lens). Microwave antigen retrieval performed with 0.01M PBS Buffer (pH 7.2) prior to IHC staining.



Immunohistochemistry analysis of paraffin-embedded Mouse spleen using CD11a/LFA-1A/ITGAL Rabbit pAb (A1644) at dilution of 1:100 (40x lens). Microwave antigen retrieval performed with 0.01M PBS Buffer (pH 7.2) prior to IHC staining.



Immunofluorescence analysis of paraffin-embedded rat spleen using CD11a/LFA-1A/ITGAL Rabbit pAb (A1644) at dilution of 1:100 (40x lens). Secondary antibody: Cy3-conjugated Goat anti-Rabbit IgG (H+L) (AS007) at 1:500 dilution. Blue: DAPI for nuclear staining.



Confocal immunofluorescence analysis of THP-1 cells using CD11a/LFA-1A/ITGAL Rabbit pAb (A1644) at dilution of 1:200. Blue: DAPI for nuclear staining.