

MCU Rabbit pAb

Catalog No.: A16281 **11 Publications**

Basic Information

Observed MW

35kDa

Calculated MW

40kDa

Category

Primary antibody

Applications

WB, IF/ICC, ELISA

Cross-Reactivity

Human, Mouse, Rat

Background

Enables calcium channel activity; identical protein binding activity; and uniporter activity. Involved in several processes, including positive regulation of mitochondrial calcium ion concentration; positive regulation of mitochondrial fission; and positive regulation of neutrophil chemotaxis. Acts upstream of or within calcium import into the mitochondrion. Located in mitochondrial inner membrane. Is integral component of mitochondrial inner membrane. Part of uniplex complex.

Recommended Dilutions

WB 1:1000 - 1:5000

IF/ICC 1:50 - 1:200

ELISA Recommended starting concentration is 1 µg/mL. Please optimize the concentration based on your specific assay requirements.

Immunogen Information

Gene ID

90550

Swiss Prot

Q8NE86

Immunogen

Recombinant protein (or fragment). This information is considered to be commercially sensitive.

Synonyms

HsMCU; C10orf42; CCDC109A; MCU

Contact

☎ | 400-999-6126

✉ | cn.market@abclonal.com.cn

🌐 | www.abclonal.com.cn

Product Information

Source

Rabbit

Isotype

IgG

Purification

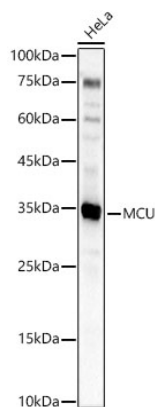
Affinity purification

Storage

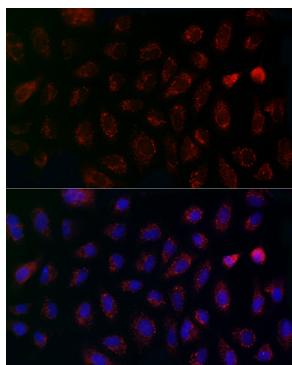
Store at -20°C. Avoid freeze / thaw cycles.

Buffer: PBS with 0.05% proclin300, 50% glycerol, pH7.3.

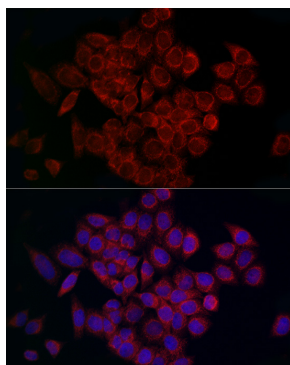
Validation Data



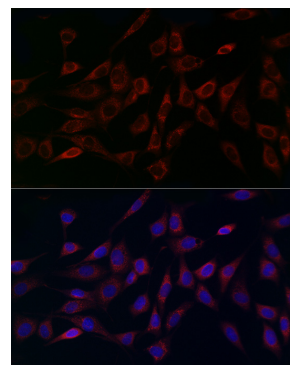
Western blot analysis of lysates from HeLa cells using MCU Rabbit pAb (A16281) at 1:2000 dilution. Secondary antibody: HRP-conjugated Goat anti-Rabbit IgG (H+L) (AS014) at 1:10000 dilution. Lysates/proteins: 25 µg per lane. Blocking buffer: 3% nonfat dry milk in TBST. Detection: ECL Basic Kit (RM00020). Exposure time: 30s.



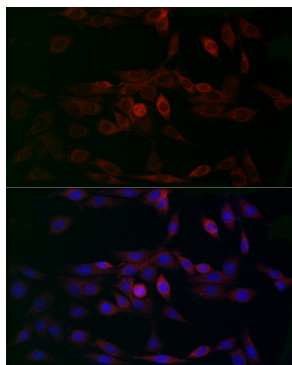
Immunofluorescence analysis of A-549 cells using MCU Rabbit pAb (A16281) at dilution of 1:200 (40x lens). Secondary antibody: Cy3-conjugated Goat anti-Rabbit IgG (H+L) (AS007) at 1:500 dilution. Blue: DAPI for nuclear staining.



Immunofluorescence analysis of HeLa cells using MCU Rabbit pAb (A16281) at dilution of 1:200 (40x lens). Secondary antibody: Cy3-conjugated Goat anti-Rabbit IgG (H+L) (AS007) at 1:500 dilution. Blue: DAPI for nuclear staining.



Immunofluorescence analysis of NIH/3T3 cells using MCU Rabbit pAb (A16281) at dilution of 1:200 (40x lens). Secondary antibody: Cy3-conjugated Goat anti-Rabbit IgG (H+L) (AS007) at 1:500 dilution. Blue: DAPI for nuclear staining.



Immunofluorescence analysis of PC-12 cells using MCU Rabbit pAb (A16281) at dilution of 1:200 (40x lens). Secondary antibody: Cy3-conjugated Goat anti-Rabbit IgG (H+L) (AS007) at 1:500 dilution. Blue: DAPI for nuclear staining.