

KPNA2 Rabbit pAb

Catalog No.: A1623 **4 Publications**

Basic Information

Observed MW

55kDa

Calculated MW

58kDa

Category

Primary antibody

Applications

WB,IP,ELISA

Cross-Reactivity

Human, Mouse

Background

The import of proteins into the nucleus is a process that involves at least 2 steps. The first is an energy-independent docking of the protein to the nuclear envelope and the second is an energy-dependent translocation through the nuclear pore complex. Imported proteins require a nuclear localization sequence (NLS) which generally consists of a short region of basic amino acids or 2 such regions spaced about 10 amino acids apart. Proteins involved in the first step of nuclear import have been identified in different systems. These include the Xenopus protein importin and its yeast homolog, SRP1 (a suppressor of certain temperature-sensitive mutations of RNA polymerase I in *Saccharomyces cerevisiae*), which bind to the NLS. KPNA2 protein interacts with the NLSs of DNA helicase Q1 and SV40 T antigen and may be involved in the nuclear transport of proteins. KPNA2 also may play a role in V(D)J recombination. Alternative splicing results in multiple transcript variants.

Recommended Dilutions

WB 1:500 - 1:2000

IP 0.5µg-4µg antibody for
200µg-400µg extracts of
whole cells

ELISA Recommended starting
concentration is 1 µg/mL.
Please optimize the
concentration based on
your specific assay
requirements.

Contact

☎ | 400-999-6126

✉ | cn.market@abclonal.com.cn

🌐 | www.abclonal.com.cn

Immunogen Information

Gene ID

3838

Swiss Prot

P52292

Immunogen

Recombinant protein (or fragment). This information is considered to be commercially sensitive.

Synonyms

QIP2; RCH1; IPOA1; PTAC58; SRP1alpha; SRP1-alpha; KPNA2

Product Information

Source

Rabbit

Isotype

IgG

Purification

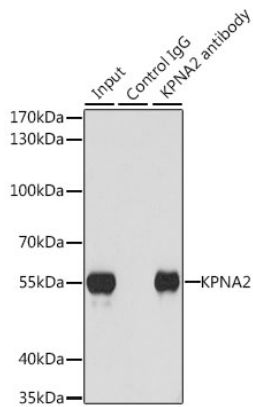
Affinity purification

Storage

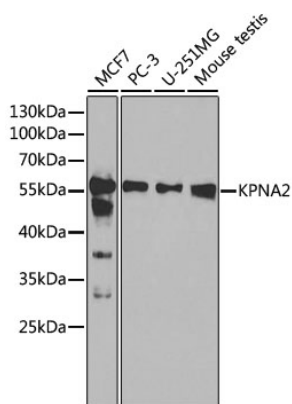
Store at -20°C. Avoid freeze / thaw cycles.

Buffer: PBS containing 50% glycerol, preserved with proclin300 or sodium azide (as specified on the Certificate of Analysis), pH 7.3.

Validation Data



Immunoprecipitation analysis of 200 µg extracts of U-251MG cells, using 3 µg KPNA2 antibody (A1623). Western blot was performed from the immunoprecipitate using KPNA2 antibody (A1623) at a dilution of 1:1000.



Western blot analysis of various lysates using KPNA2 Rabbit pAb (A1623) at 1:1000 dilution. Secondary antibody: HRP-conjugated Goat anti-Rabbit IgG (H+L) (AS014) at 1:10000 dilution. Lysates/proteins: 25µg per lane. Blocking buffer: 3% nonfat dry milk in TBST.