

TRAPPC6A Rabbit pAb

Catalog No.: A16143

Basic Information

Observed MW

18kDa

Calculated MW

18kDa

Category

Primary antibody

Applications

WB,IF/ICC,ELISA

Cross-Reactivity

Mouse, Rat

Background

This gene encodes a component of the trafficking protein particle complex, which tethers transport vesicles to the cis-Golgi membrane. Loss of expression of the related gene in mouse affects coat and eye pigmentation, suggesting that the encoded protein may be involved in melanosome biogenesis. Alternatively spliced transcript variants encoding multiple isoforms have been observed for this gene.

Recommended Dilutions

WB 1:500 - 1:2000

IF/ICC 1:50 - 1:200

ELISA Recommended starting concentration is 1 µg/mL. Please optimize the concentration based on your specific assay requirements.

Immunogen Information

Gene ID

79090

Swiss Prot

O75865

Immunogen

Recombinant protein (or fragment). This information is considered to be commercially sensitive.

Synonyms

TRS33; TRAPPC6A

Contact

☎ | 400-999-6126

✉ | cn.market@abclonal.com.cn

🌐 | www.abclonal.com.cn

Product Information

Source

Rabbit

Isotype

IgG

Purification

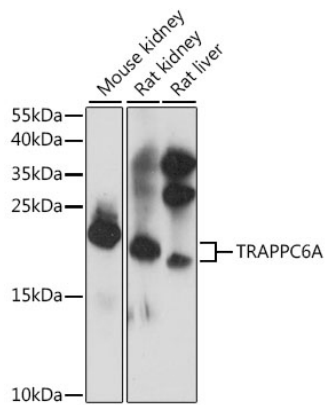
Affinity purification

Storage

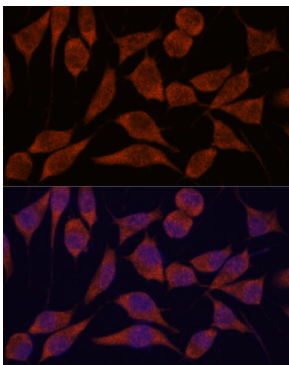
Store at -20°C. Avoid freeze / thaw cycles.

Buffer: PBS with 0.01% thimerosal, 50% glycerol, pH7.3.

Validation Data



Western blot analysis of various lysates using TRAPPC6A Rabbit pAb (A16143) at 1:1000 dilution.
Secondary antibody: HRP-conjugated Goat anti-Rabbit IgG (H+L) (AS014) at 1:10000 dilution.
Lysates/proteins: 25µg per lane.
Blocking buffer: 3% nonfat dry milk in TBST.
Detection: ECL Basic Kit (RM00020).
Exposure time: 30s.



Immunofluorescence analysis of L929 cells using TRAPPC6A Rabbit pAb (A16143) at dilution of 1:100. Secondary antibody: Cy3-conjugated Goat anti-Rabbit IgG (H+L) (AS007) at 1:500 dilution. Blue: DAPI for nuclear staining.