

CAB39 Rabbit pAb

Catalog No.: A16125 **1 Publications**

Basic Information

Observed MW

39kDa

Calculated MW

40kDa

Category

Primary antibody

Applications

WB, IF/ICC, ELISA

Cross-Reactivity

Human, Mouse, Rat

Background

Enables kinase binding activity and protein serine/threonine kinase activator activity. Involved in intracellular signal transduction; peptidyl-serine phosphorylation; and positive regulation of protein phosphorylation. Located in extracellular exosome. Implicated in hepatocellular carcinoma. Biomarker of hepatocellular carcinoma and pancreatic cancer.

Recommended Dilutions

WB 1:500 - 1:1000

IF/ICC 1:50 - 1:200

ELISA Recommended starting concentration is 1 µg/mL. Please optimize the concentration based on your specific assay requirements.

Immunogen Information

Gene ID

51719

Swiss Prot

Q9Y376

Immunogen

Synthetic peptide. This information is considered to be commercially sensitive.

Synonyms

MO25; CGI-66; CAB39

Contact

☎ | 400-999-6126

✉ | cn.market@abclonal.com.cn

🌐 | www.abclonal.com.cn

Product Information

Source

Rabbit

Isotype

IgG

Purification

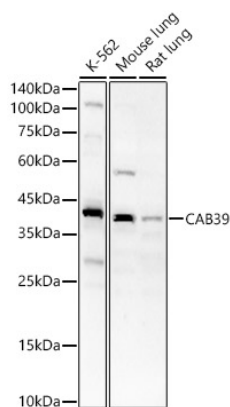
Affinity purification

Storage

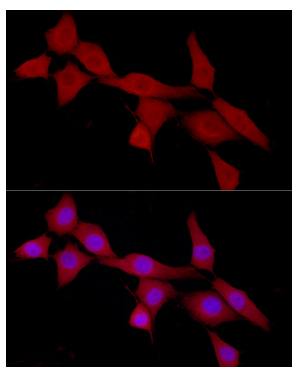
Store at -20°C. Avoid freeze / thaw cycles.

Buffer: PBS containing 50% glycerol, preserved with proclin300 or sodium azide (as specified on the Certificate of Analysis), pH 7.3.

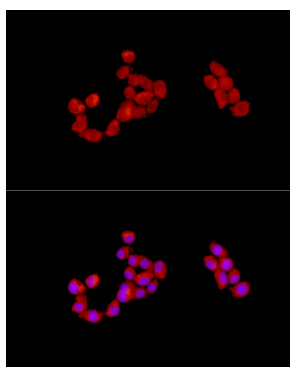
Validation Data



Western blot analysis of various lysates, using CAB39 Rabbit pAb (A16125) at 1:700 dilution.
Secondary antibody: HRP-conjugated Goat anti-Rabbit IgG (H+L) (AS014) at 1:10000 dilution.
Lysates/proteins: 25µg per lane.
Blocking buffer: 3% nonfat dry milk in TBST.
Detection: ECL Basic Kit (RM00020).
Exposure time: 60s.



Immunofluorescence analysis of NIH/3T3 cells using CAB39 Rabbit pAb (A16125) at dilution of 1:100 (40x lens). Secondary antibody: Cy3-conjugated Goat anti-Rabbit IgG (H+L) (AS007) at 1:500 dilution. Blue: DAPI for nuclear staining.



Immunofluorescence analysis of PC-12 cells using CAB39 Rabbit pAb (A16125) at dilution of 1:100 (40x lens). Secondary antibody: Cy3-conjugated Goat anti-Rabbit IgG (H+L) (AS007) at 1:500 dilution. Blue: DAPI for nuclear staining.