

DiMethyl-DNMT3A-K44 Rabbit pAb

Catalog No.: A16012

Basic Information

Observed MW

Calculated MW

102kDa

Category

Primary antibody

Applications

IF/ICC,ELISA

Cross-Reactivity

Human, Mouse, Rat

Background

This is one of two related genes encoding de novo DNA methyltransferases, which are responsible for the establishment of DNA methylation patterns in embryos. Loss of function of this gene causes developmental defects in multiple different organ systems. There is a pseudogene for this gene located on chromosome 3. Alternatively spliced transcript variants encoding multiple isoforms have been observed.

Recommended Dilutions

IF/ICC 1:50 - 1:200

ELISA Recommended starting concentration is 1 µg/mL. Please optimize the concentration based on your specific assay requirements.

Immunogen Information

Gene ID

13435

Swiss Prot

O88508

Immunogen

Synthetic peptide. This information is considered to be commercially sensitive.

Synonyms

Mmullia; DiMethyl-DNMT3A-K44

Contact

☎ | 400-999-6126

✉ | cn.market@abclonal.com.cn

🌐 | www.abclonal.com.cn

Product Information

Source

Rabbit

Isotype

IgG

Purification

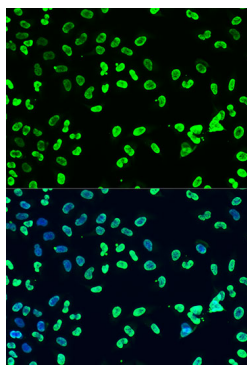
Affinity purification

Storage

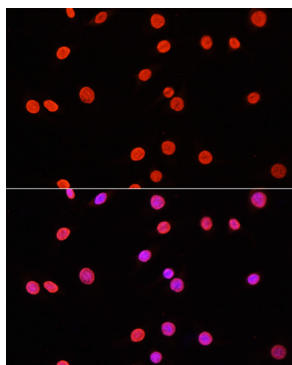
Store at -20°C. Avoid freeze / thaw cycles.

Buffer: PBS with 0.02% sodium azide, 50% glycerol, pH7.3.

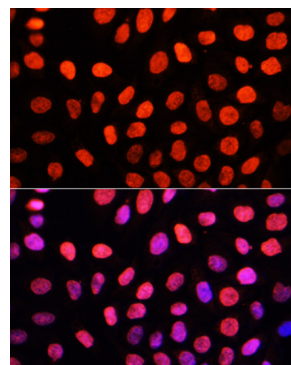
Validation Data



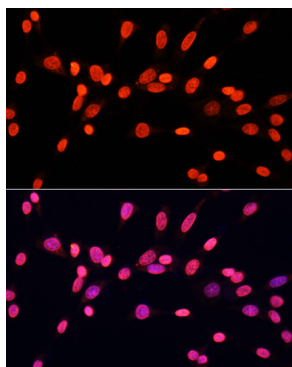
Immunofluorescence analysis of U2OS cells using DiMethyl-DNMT3A-K44 Rabbit pAb (A16012) at dilution of 1:100. Secondary antibody: Cy3-conjugated Goat anti-Rabbit IgG (H+L) (AS007) at 1:500 dilution. Blue: DAPI for nuclear staining.



Immunofluorescence analysis of C6 cells using DiMethyl-DNMT3A-K44 Rabbit pAb (A16012) at dilution of 1:100. Secondary antibody: Cy3-conjugated Goat anti-Rabbit IgG (H+L) (AS007) at 1:500 dilution. Blue: DAPI for nuclear staining.



Immunofluorescence analysis of HeLa cells using DiMethyl-DNMT3A-K44 Rabbit pAb (A16012) at dilution of 1:100. Secondary antibody: Cy3-conjugated Goat anti-Rabbit IgG (H+L) (AS007) at 1:500 dilution. Blue: DAPI for nuclear staining.



Immunofluorescence analysis of NIH/3T3 cells using DiMethyl-DNMT3A-K44 Rabbit pAb (A16012) at dilution of 1:100. Secondary antibody: Cy3-conjugated Goat anti-Rabbit IgG (H+L) (AS007) at 1:500 dilution. Blue: DAPI for nuclear staining.