

KHDRBS2 Rabbit pAb

Catalog No.: A15969

Basic Information

Observed MW

Calculated MW

39kDa

Category

Primary antibody

Applications

IF/ICC,ELISA

Cross-Reactivity

Human

Background

Predicted to enable mRNA binding activity and poly(A) binding activity. Predicted to be involved in regulation of alternative mRNA splicing, via spliceosome. Predicted to be located in nucleoplasm. Predicted to be active in nucleus.

Recommended Dilutions

IF/ICC 1:50 - 1:200

ELISA Recommended starting concentration is 1 µg/mL. Please optimize the concentration based on your specific assay requirements.

Immunogen Information

Gene ID

202559

Swiss Prot

Q5VWX1

Immunogen

Synthetic peptide. This information is considered to be commercially sensitive.

Synonyms

SLM1; SLM-1; KHDRBS2

Contact

 | 400-999-6126

 | cn.market@abclonal.com.cn

 | www.abclonal.com.cn

Product Information

Source

Rabbit

Isotype

IgG

Purification

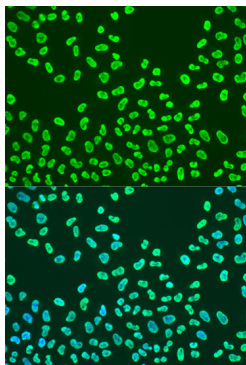
Affinity purification

Storage

Store at -20°C. Avoid freeze / thaw cycles.

Buffer: PBS with 0.02% sodium azide, 50% glycerol, pH7.3.

Validation Data



Immunofluorescence analysis of U2OS cells using KHDRBS2 Rabbit pAb (A15969) at dilution of 1:100. Secondary antibody: Cy3-conjugated Goat anti-Rabbit IgG (H+L) (AS007) at 1:500 dilution. Blue: DAPI for nuclear staining.