

Bad Rabbit pAb

Catalog No.: A1593

8 Publications

Basic Information

Observed MW

15kDa

Calculated MW

18kDa

Category

Primary antibody

Applications

WB, IF/ICC, ELISA

Cross-Reactivity

Human, Mouse, Rat

Background

The protein encoded by this gene is a member of the BCL-2 family. BCL-2 family members are known to be regulators of programmed cell death. This protein positively regulates cell apoptosis by forming heterodimers with BCL-xL (B-cell lymphoma-extra large) and BCL-2, and reversing their death repressor activity. Proapoptotic activity of this protein is regulated through its phosphorylation. Protein kinases AKT and MAP kinase, as well as protein phosphatase calcineurin were found to be involved in the regulation of this protein. Alternative splicing of this gene results in two transcript variants which encode the same isoform.

Recommended Dilutions

WB 1:500 - 1:2000**IF/ICC** 1:10 - 1:100

ELISA Recommended starting concentration is 1 µg/mL. Please optimize the concentration based on your specific assay requirements.

Immunogen Information

Gene ID

572

Swiss Prot

Q92934

Immunogen

Synthetic peptide. This information is considered to be commercially sensitive.

Synonyms

BBC2; BCL2L8; Bad

Contact

 | 400-999-6126 | cn.market@abclonal.com.cn | www.abclonal.com.cn

Product Information

Source

Rabbit

Isotype

IgG

Purification

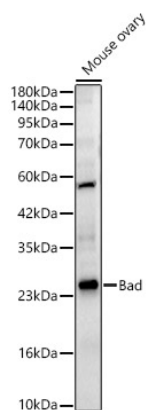
Affinity purification

Storage

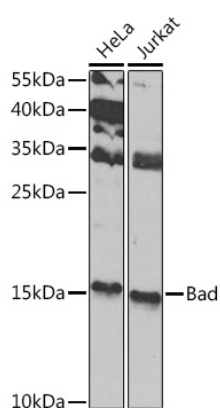
Store at -20°C. Avoid freeze / thaw cycles.

Buffer: PBS containing 50% glycerol, preserved with proclin300 or sodium azide (as specified on the Certificate of Analysis), pH 7.3.

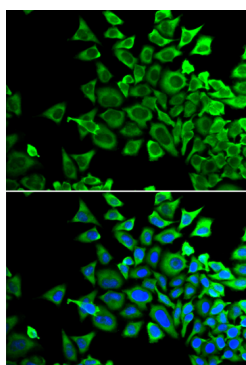
Validation Data



Western blot analysis of lysates from Mouse ovary, using Bad Rabbit pAb (A1593) at 1:700 dilution.
Secondary antibody: HRP-conjugated Goat anti-Rabbit IgG (H+L) (AS014) at 1:10000 dilution.
Lysates/proteins: 25µg per lane.
Blocking buffer: 3% nonfat dry milk in TBST.
Detection: ECL Basic Kit (RM00020).
Exposure time: 30s.



Western blot analysis of various lysates using Bad Rabbit pAb (A1593) at 1:1000 dilution.
Secondary antibody: HRP-conjugated Goat anti-Rabbit IgG (H+L) (AS014) at 1:10000 dilution.
Lysates/proteins: 25µg per lane.
Blocking buffer: 3% nonfat dry milk in TBST.
Detection: ECL Basic Kit (RM00020).
Exposure time: 90s.



Immunofluorescence analysis of HeLa cells using Bad Rabbit pAb (A1593). Secondary antibody: Cy3-conjugated Goat anti-Rabbit IgG (H+L) (AS007) at 1:500 dilution. Blue: DAPI for nuclear staining.