

Defb26 Rabbit pAb

Catalog No.: A15903

Basic Information

Observed MW

Calculated MW

14kDa

Category

Primary antibody

Applications

IF/ICC,ELISA

Cross-Reactivity

Human

Background

Predicted to be involved in defense response to bacterium and innate immune response. Predicted to be located in extracellular region. Orthologous to human DEFB125 (defensin beta 125).

Recommended Dilutions

IF/ICC 1:50 - 1:200

ELISA Recommended starting concentration is 1 µg/mL. Please optimize the concentration based on your specific assay requirements.

Immunogen Information

Gene ID

641629

Swiss Prot

Q32ZG6

Immunogen

Recombinant protein (or fragment). This information is considered to be commercially sensitive.

Synonyms

DEFB126; C20orf8; DEFB-26; DEFB26; HBD26; bA530N10.1; hBD-26; Defb26

Contact

 | 400-999-6126

 | cn.market@abclonal.com.cn

 | www.abclonal.com.cn

Product Information

Source

Rabbit

Isotype

IgG

Purification

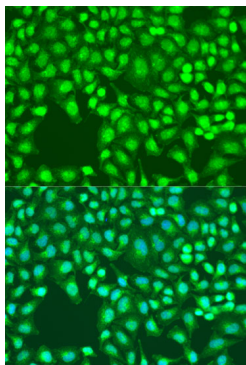
Affinity purification

Storage

Store at -20°C. Avoid freeze / thaw cycles.

Buffer: PBS containing 50% glycerol, preserved with proclin300 or sodium azide (as specified on the Certificate of Analysis), pH 7.3.

Validation Data



Immunofluorescence analysis of U2OS cells using Defb26 Rabbit pAb (A15903) at dilution of 1:100. Secondary antibody: Cy3-conjugated Goat anti-Rabbit IgG (H+L) (AS007) at 1:500 dilution. Blue: DAPI for nuclear staining.