

METTL16 Rabbit pAb

Catalog No.: A15894 **5 Publications**

Basic Information

Observed MW

70kDa

Calculated MW

64kDa

Category

Primary antibody

Applications

WB, IHC-P, IF/ICC, IP, ELISA

Cross-Reactivity

Human, Mouse, Rat

Background

Enables RNA binding activity and RNA methyltransferase activity. Involved in RNA modification and regulation of mRNA metabolic process. Located in cytoplasm and nucleus.

Recommended Dilutions

WB	1:500 - 1:1000
IHC-P	1:50 - 1:200
IF/ICC	1:50 - 1:200
IP	0.5µg-4µg antibody for 200µg-400µg extracts of whole cells
ELISA	Recommended starting concentration is 1 µg/mL. Please optimize the concentration based on your specific assay requirements.

Contact

☎ | 400-999-6126

✉ | cn.market@abclonal.com.cn

🌐 | www.abclonal.com.cn

Immunogen Information

Gene ID

79066

Swiss Prot

Q86W50

Immunogen

Recombinant protein (or fragment). This information is considered to be commercially sensitive.

Synonyms

METT10D; METTL16

Product Information

Source

Rabbit

Isotype

IgG

Purification

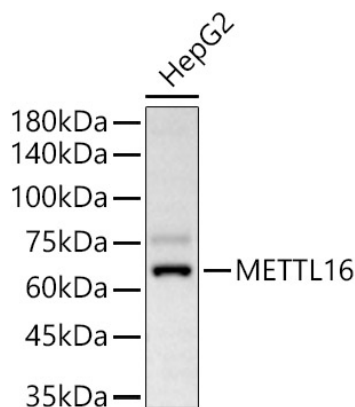
Affinity purification

Storage

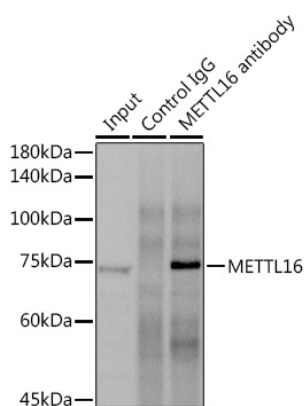
Store at -20°C. Avoid freeze / thaw cycles.

Buffer: PBS with 0.09% Sodium azide, 50% glycerol, pH7.3.

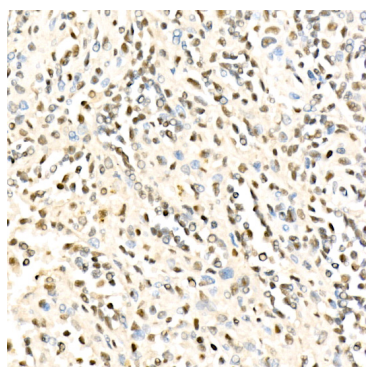
Validation Data



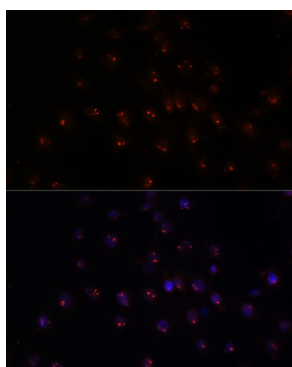
Western blot analysis of lysates from Hep G2 cells using METTL16 Rabbit pAb (A15894) at 1:900 dilution. Secondary antibody: HRP-conjugated Goat anti-Rabbit IgG (H+L) (AS014) at 1:10000 dilution. Lysates/proteins: 25 µg per lane. Blocking buffer: 3% nonfat dry milk in TBST. Detection: ECL Basic Kit (RM00020). Exposure time: 30s.



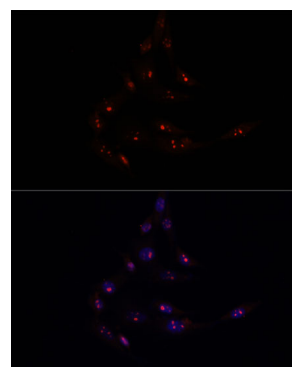
Immunoprecipitation analysis of 300 µg extracts of LNCaP cells using 3 µg METTL16 antibody (A15894). Western blot was performed from the immunoprecipitate using METTL16 (A15894) at a dilution of 1:1000.



Immunohistochemistry analysis of paraffin-embedded Human spleen using METTL16 Rabbit pAb (A15894) at dilution of 1:100 (40x lens). High pressure antigen retrieval performed with 0.01M Citrate buffer (pH 6.0) prior to IHC staining.

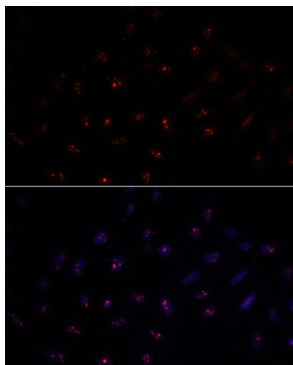


Immunofluorescence analysis of C6 cells using METTL16 Rabbit pAb (A15894) at dilution of 1:100. Secondary antibody: Cy3-conjugated Goat anti-Rabbit IgG (H+L) (AS007) at 1:500 dilution. Blue: DAPI for nuclear staining.



Immunofluorescence analysis of NIH/3T3 cells using METTL16 Rabbit pAb (A15894) at dilution of 1:100. Secondary antibody: Cy3-conjugated Goat anti-Rabbit IgG (H+L) (AS007) at 1:500 dilution. Blue: DAPI for nuclear staining.

Validation Data



Immunofluorescence analysis of U-2 OS cells using METTL16 Rabbit pAb (A15894) at dilution of 1:100. Secondary antibody: Cy3-conjugated Goat anti-Rabbit IgG (H+L) (AS007) at 1:500 dilution. Blue: DAPI for nuclear staining.