

FSTL1 Rabbit pAb

Catalog No.: A15789 **2 Publications**

Basic Information

Observed MW

45kDa

Calculated MW

35kDa

Category

Primary antibody

Applications

WB,IF/ICC,IF-P,ELISA

Cross-Reactivity

Human, Mouse, Rat

Background

This gene encodes a protein with similarity to follistatin, an activin-binding protein. It contains an FS module, a follistatin-like sequence containing 10 conserved cysteine residues. This gene product is thought to be an autoantigen associated with rheumatoid arthritis.

Recommended Dilutions

WB 1:500 - 1:1000

IF/ICC 1:50 - 1:200

IF-P 1:50 - 1:200

ELISA Recommended starting concentration is 1 µg/mL. Please optimize the concentration based on your specific assay requirements.

Immunogen Information

Gene ID

11167

Swiss Prot

Q12841

Immunogen

Recombinant protein (or fragment). This information is considered to be commercially sensitive.

Synonyms

FRP; FSL1; OCC1; OCC-1; tsc36; MIR198; FSTL1

Contact

☎ | 400-999-6126

✉ | cn.market@abclonal.com.cn

🌐 | www.abclonal.com.cn

Product Information

Source

Rabbit

Isotype

IgG

Purification

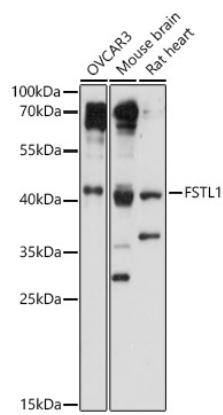
Affinity purification

Storage

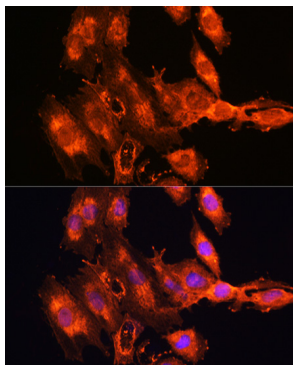
Store at -20°C. Avoid freeze / thaw cycles.

Buffer: PBS with 0.01% thimerosal, 50% glycerol, pH7.3.

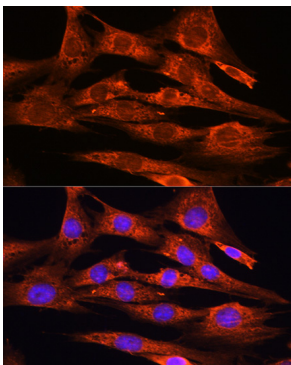
Validation Data



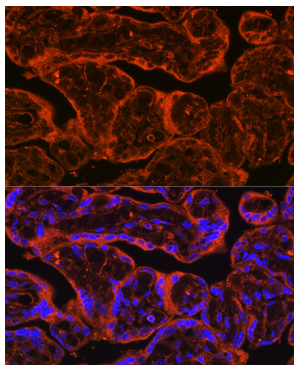
Western blot analysis of various lysates using FSTL1 Rabbit pAb (A15789) at 1:1000 dilution.
Secondary antibody: HRP-conjugated Goat anti-Rabbit IgG (H+L) (AS014) at 1:10000 dilution.
Lysates/proteins: 25µg per lane.
Blocking buffer: 3% nonfat dry milk in TBST.
Detection: ECL Basic Kit (RM00020).
Exposure time: 30s.



Immunofluorescence analysis of C6 cells using FSTL1 Rabbit pAb (A15789) at dilution of 1:100. Blue: DAPI for nuclear staining.



Immunofluorescence analysis of NIH/3T3 cells using FSTL1 Rabbit pAb (A15789) at dilution of 1:100. Blue: DAPI for nuclear staining.



Immunofluorescence analysis of Human placenta using FSTL1 Rabbit pAb (A15789) at dilution of 1:100. Blue: DAPI for nuclear staining.