

TPH1 Rabbit pAb

Catalog No.: A1569

4 Publications

Basic Information

Observed MW

51kDa

Calculated MW

51kDa

Category

Primary antibody

Applications

WB, ELISA

Cross-Reactivity

Human, Mouse, Rat

Background

This gene encodes a member of the aromatic amino acid hydroxylase family. The encoded protein catalyzes the first and rate limiting step in the biosynthesis of serotonin, an important hormone and neurotransmitter. Mutations in this gene have been associated with an elevated risk for a variety of diseases and disorders, including schizophrenia, somatic anxiety, anger-related traits, bipolar disorder, suicidal behavior, addictions, and others.

Recommended Dilutions

WB 1:500 - 1:1000

ELISA Recommended starting concentration is 1 µg/mL. Please optimize the concentration based on your specific assay requirements.

Immunogen Information

Gene ID

7166

Swiss Prot

P17752

Immunogen

Recombinant protein (or fragment). This information is considered to be commercially sensitive.

Synonyms

TPRH; TRPH; TPH1

Contact

☎ | 400-999-6126

✉ | cn.market@abclonal.com.cn

🌐 | www.abclonal.com.cn

Product Information

Source

Rabbit

Isotype

IgG

Purification

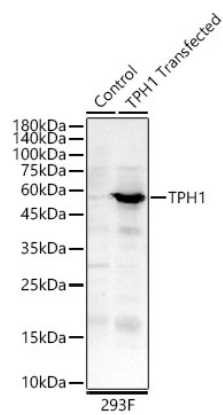
Affinity purification

Storage

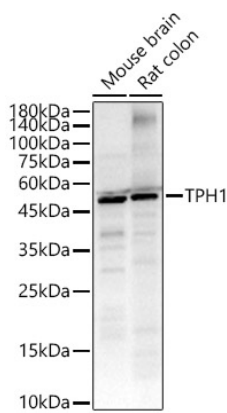
Store at -20°C. Avoid freeze / thaw cycles.

Buffer: PBS containing 50% glycerol, preserved with proclin300 or sodium azide (as specified on the Certificate of Analysis), pH 7.3.

Validation Data



Western blot analysis of lysates from wild type (WT) and 293F cells transfected with TPH1 using TPH1 Rabbit pAb (A1569) at 1:1000 dilution.
Secondary antibody: HRP-conjugated Goat anti-Rabbit IgG (H+L) (AS014) at 1:10000 dilution.
Lysates/proteins: 25µg per lane.
Blocking buffer: 3% nonfat dry milk in TBST.
Detection: ECL Basic Kit (RM00020).
Exposure time: 90 s.



Western blot analysis of various lysates, using TPH1 Rabbit pAb (A1569) at 1:1000 dilution.
Secondary antibody: HRP-conjugated Goat anti-Rabbit IgG (H+L) (AS014) at 1:10000 dilution.
Lysates/proteins: 25µg per lane.
Blocking buffer: 3% nonfat dry milk in TBST.
Detection: ECL Basic Kit (RM00020).
Exposure time: 90s.