

# Folate Binding Protein(FBP) / FOLR1 Rabbit pAb

Catalog No.: A15672 **1 Publications**

## Basic Information

### Observed MW

37kDa

### Calculated MW

30kDa

### Category

Primary antibody

### Applications

WB,IHC-P,IF/ICC,ELISA

### Cross-Reactivity

Human, Mouse, Rat

## Background

The protein encoded by this gene is a member of the folate receptor family. Members of this gene family bind folic acid and its reduced derivatives, and transport 5-methyltetrahydrofolate into cells. This gene product is a secreted protein that either anchors to membranes via a glycosyl-phosphatidylinositol linkage or exists in a soluble form. Mutations in this gene have been associated with neurodegeneration due to cerebral folate transport deficiency. Due to the presence of two promoters, multiple transcription start sites, and alternative splicing, multiple transcript variants encoding the same protein have been found for this gene.

## Recommended Dilutions

**WB** 1:500 - 1:2000

**IHC-P** 1:50 - 1:200

**IF/ICC** 1:50 - 1:200

**ELISA** Recommended starting concentration is 1 µg/mL. Please optimize the concentration based on your specific assay requirements.

## Immunogen Information

### Gene ID

2348

### Swiss Prot

P15328

### Immunogen

Synthetic peptide. This information is considered to be commercially sensitive.

### Synonyms

FBP; FOLR; NCFTD; FRalpha; Folate Binding Protein(FBP) / FOLR1

## Contact

☎ | 400-999-6126

✉ | [cn.market@abclonal.com.cn](mailto:cn.market@abclonal.com.cn)

🌐 | [www.abclonal.com.cn](http://www.abclonal.com.cn)

## Product Information

### Source

Rabbit

### Isotype

IgG

### Purification

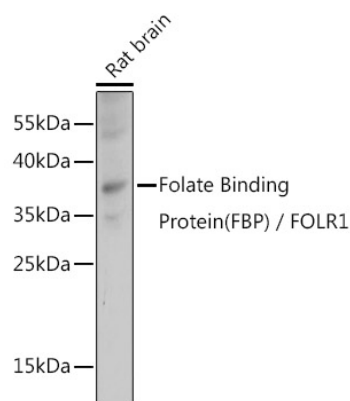
Affinity purification

### Storage

Store at -20°C. Avoid freeze / thaw cycles.

Buffer: PBS with 0.01% thimerosal, 50% glycerol, pH7.3.

## Validation Data



Western blot analysis of lysates from Rat brain, using Folate Binding Protein(FBP) / FOLR1 Rabbit pAb (A15672) at 1:1000 dilution.

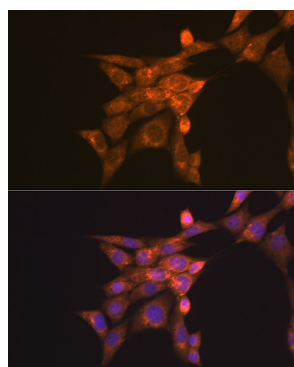
Secondary antibody: HRP-conjugated Goat anti-Rabbit IgG (H+L) (AS014) at 1:10000 dilution.

Lysates/proteins: 25µg per lane.

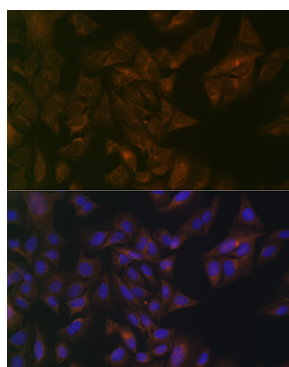
Blocking buffer: 3% nonfat dry milk in TBST.

Detection: ECL Basic Kit (RM00020).

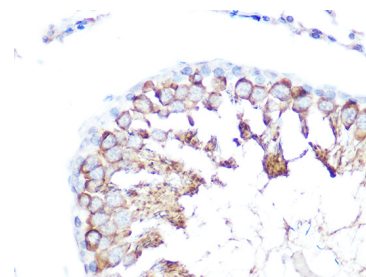
Exposure time: 1s.



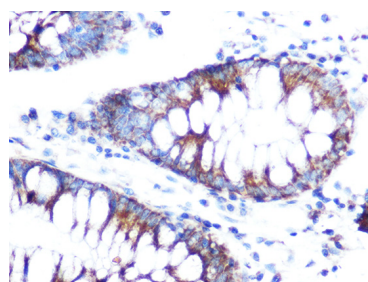
Immunofluorescence analysis of NIH-3T3 cells using Folate Binding Protein(FBP) / FOLR1 Rabbit pAb (A15672) at dilution of 1:100 (40x lens). Secondary antibody: Cy3-conjugated Goat anti-Rabbit IgG (H+L) (AS007) at 1:500 dilution. Blue: DAPI for nuclear staining.



Immunofluorescence analysis of U-2 OS cells using Folate Binding Protein(FBP) / FOLR1 Rabbit pAb (A15672) at dilution of 1:100 (40x lens). Secondary antibody: Cy3-conjugated Goat anti-Rabbit IgG (H+L) (AS007) at 1:500 dilution. Blue: DAPI for nuclear staining.



Immunohistochemistry analysis of paraffin-embedded Rat testis using Folate Binding Protein(FBP) / FOLR1 Rabbit pAb (A15672) at dilution of 1:100 (40x lens). Microwave antigen retrieval performed with 0.01M Tris/EDTA Buffer (pH 9.0) prior to IHC staining.



Immunohistochemistry analysis of paraffin-embedded Human colon using Folate Binding Protein(FBP) / FOLR1 Rabbit pAb (A15672) at dilution of 1:100 (40x lens). Microwave antigen retrieval performed with 0.01M Tris/EDTA Buffer (pH 9.0) prior to IHC staining.