

Acetyl-Histone H2A-K5 Rabbit pAb

Catalog No.: A15620

1 Publications

Basic Information

Observed MW

14kDa

Calculated MW

14kDa

Category

Primary antibody

Applications

WB, IF/ICC, ELISA

Cross-Reactivity

Human, Mouse, Rat, Other (Wide Range Predicted)

Background

Histones are basic nuclear proteins that are responsible for the nucleosome structure of the chromosomal fiber in eukaryotes. Two molecules of each of the four core histones (H2A, H2B, H3, and H4) form an octamer, around which approximately 146 bp of DNA is wrapped in repeating units, called nucleosomes. The linker histone, H1, interacts with linker DNA between nucleosomes and functions in the compaction of chromatin into higher order structures. This gene is intronless and encodes a replication-dependent histone that is a member of the histone H2A family. Transcripts from this gene lack polyA tails but instead contain a palindromic termination element. This gene is found in the small histone gene cluster on chromosome 6p22-p21.3.

Recommended Dilutions

WB 1:500 - 1:1000**IF/ICC** 1:50 - 1:100

ELISA Recommended starting concentration is 1 µg/mL. Please optimize the concentration based on your specific assay requirements.

Immunogen Information

Gene ID

3012/8329

Swiss Prot

P04908/P0C0S8

Immunogen

Synthetic peptide. This information is considered to be commercially sensitive.

Synonyms

H2A/c; H2AFC; H2AC11; H2AC15; H2AC16; H2AC17; HIST1H2AI; Acetyl-Histone H2A-K5

Contact

 | 400-999-6126 | cn.market@abclonal.com.cn | www.abclonal.com.cn

Product Information

Source

Rabbit

Isotype

IgG

Purification

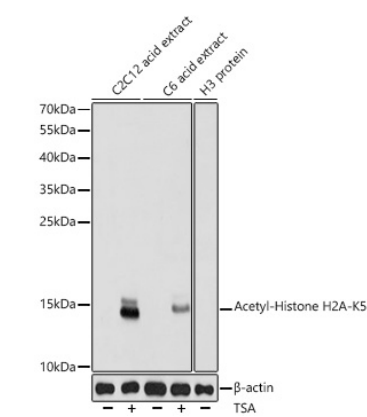
Affinity purification

Storage

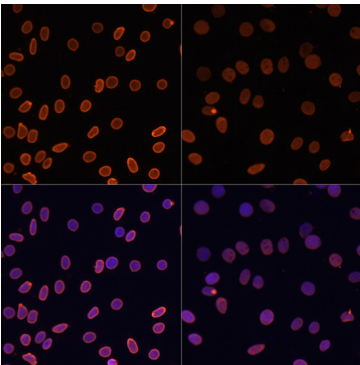
Store at -20°C. Avoid freeze / thaw cycles.

Buffer: PBS with 0.01% thimerosal, 50% glycerol, pH7.3.

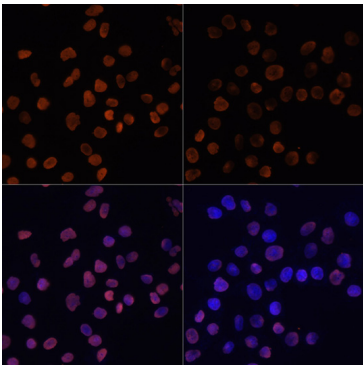
Validation Data



Western blot analysis of various lysates using Acetyl-Histone H2A-K5 Rabbit pAb (A15620) at 1:1000 dilution. C2C12 cells and C6 cells were treated with TSA (1 uM) at 37°C for 18 hours.
Secondary antibody: HRP-conjugated Goat anti-Rabbit IgG (H+L) (AS014) at 1:10000 dilution.
Lysates/proteins: 25µg per lane.
Blocking buffer: 3% nonfat dry milk in TBST.
Detection: ECL Basic Kit (RM00020).
Exposure time: 1s.



Immunofluorescence analysis of C6 cells using Acetyl-Histone H2A-K5 Rabbit pAb (A15620) at dilution of 1:100.C6 cells were treated with TSA (1 uM) at 37°C for 18 hours. Blue: DAPI for nuclear staining.



Immunofluorescence analysis of HeLa cells using Acetyl-Histone H2A-K5 Rabbit pAb (A15620) at dilution of 1:100.HeLa cells were treated with TSA (1 uM) at 37°C for 18 hours. Blue: DAPI for nuclear staining.