

WDR82 Rabbit pAb

Catalog No.: A15518

1 Publications

Basic Information

Observed MW

35kDa

Calculated MW

35kDa

Category

Primary antibody

Applications

WB, ELISA

Cross-Reactivity

Human, Mouse, Rat

Background

TMEM113 (WDR82) is a component of the mammalian SET1A (MIM 611052)/SET1B (MIM 611055) histone H3-Lys4 methyltransferase complexes (Lee and Skalnik, 2005 [PubMed 16253997]; Lee et al., 2007 [PubMed 17355966]).

Recommended Dilutions

WB 1:200 - 1:2000

ELISA Recommended starting concentration is 1 µg/mL. Please optimize the concentration based on your specific assay requirements.

Immunogen Information

Gene ID

80335

Swiss Prot

Q6UXN9

Immunogen

Recombinant protein (or fragment). This information is considered to be commercially sensitive.

Synonyms

SWD2; MST107; WDR82A; MSTP107; PRO2730; TMEM113; PRO34047; WDR82

Contact

☎ | 400-999-6126

✉ | cn.market@abclonal.com.cn

🌐 | www.abclonal.com.cn

Product Information

Source

Rabbit

Isotype

IgG

Purification

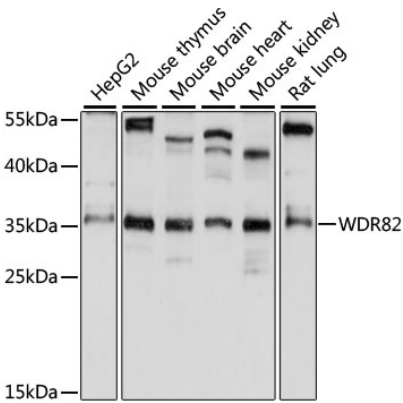
Affinity purification

Storage

Store at -20°C. Avoid freeze / thaw cycles.

Buffer: PBS with 0.01% thimerosal, 50% glycerol, pH7.3.

Validation Data



Western blot analysis of various lysates using WDR82 Rabbit pAb (A15518) at 1:1000 dilution.
Secondary antibody: HRP-conjugated Goat anti-Rabbit IgG (H+L) (AS014) at 1:10000 dilution.
Lysates/proteins: 25µg per lane.
Blocking buffer: 3% nonfat dry milk in TBST.
Detection: ECL Basic Kit (RM00020).
Exposure time: 10s.