

PERP Rabbit pAb

Catalog No.: A15501

Basic Information

Observed MW

17kDa

Calculated MW

21kDa

Category

Primary antibody

Applications

ELISA, WB

Cross-Reactivity

Human, Mouse

Background

Involved in activation of cysteine-type endopeptidase activity. Predicted to be located in plasma membrane. Predicted to be active in cell-cell junction. Implicated in erythrokeratoderma variabilis and mutilating palmoplantar keratoderma with periorificial keratotic plaques.

Recommended Dilutions

WB 1:200 - 1:2000

Immunogen Information

Gene ID

64065

Swiss Prot

Q96FX8

Immunogen

A synthetic peptide corresponding to a sequence within amino acids 100 to the C-terminus of human PERP (NP_071404.2).

Synonyms

THW; KCP1; EKVP7; OLMS2; PIGPC1; KRTCAP1; dJ496H19.1; PERP

Contact

☎ | 400-999-6126

✉ | cn.market@abclonal.com.cn

🌐 | www.abclonal.com.cn

Product Information

Source

Rabbit

Isotype

IgG

Purification

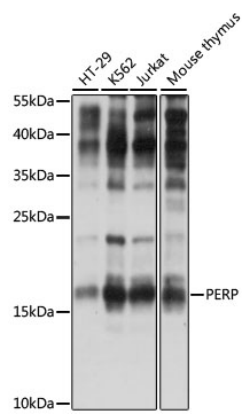
Affinity purification

Storage

Store at -20°C. Avoid freeze / thaw cycles.

Buffer: PBS with 0.01% thimerosal, 50% glycerol, pH7.3.

Validation Data



Western blot analysis of various lysates using PERP Rabbit pAb (A15501) at 1:1000 dilution.
Secondary antibody: HRP Goat Anti-Rabbit IgG (H+L) (AS014) at 1:10000 dilution.
Lysates/proteins: 25µg per lane.
Blocking buffer: 3% nonfat dry milk in TBST.
Detection: ECL Basic Kit (RM00020).
Exposure time: 90s.