

# AFG3L2 Rabbit pAb

Catalog No.: A15393

## Basic Information

### Observed MW

80-90kDa

### Calculated MW

89kDa

### Category

Primary antibody

### Applications

WB, IHC-P, IP, ELISA

### Cross-Reactivity

Human, Mouse, Rat

## Background

This gene encodes a protein localized in mitochondria and closely related to paraplegin. The paraplegin gene is responsible for an autosomal recessive form of hereditary spastic paraplegia. This gene is a candidate gene for other hereditary spastic paraplegias or neurodegenerative disorders.

## Recommended Dilutions

**WB** 1:500 - 1:1000

**IHC-P** 1:50 - 1:200

**IP** 0.5µg-4µg antibody for  
200µg-400µg extracts of  
whole cells

**ELISA** Recommended starting  
concentration is 1 µg/mL.  
Please optimize the  
concentration based on  
your specific assay  
requirements.

## Immunogen Information

### Gene ID

10939

### Swiss Prot

Q9Y4W6

### Immunogen

Recombinant protein (or fragment). This information is considered to be commercially sensitive.

### Synonyms

OPA12; SCA28; SPAX5; AFG3L2

## Contact

☎ | 400-999-6126

✉ | [cn.market@abclonal.com.cn](mailto:cn.market@abclonal.com.cn)

🌐 | [www.abclonal.com.cn](http://www.abclonal.com.cn)

## Product Information

### Source

Rabbit

### Isotype

IgG

### Purification

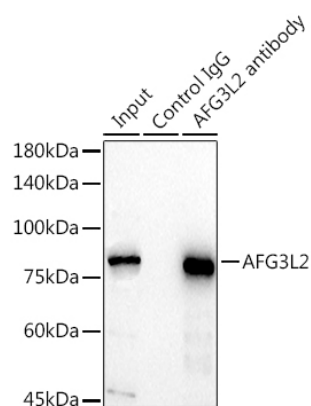
Affinity purification

### Storage

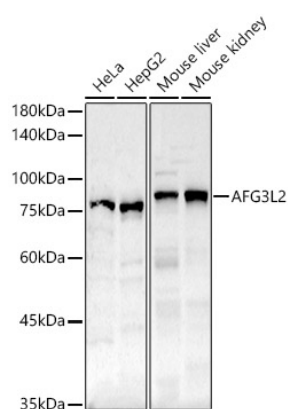
Store at -20°C. Avoid freeze / thaw cycles.

Buffer: PBS containing 50% glycerol, preserved with proclin300 or sodium azide (as specified on the Certificate of Analysis), pH 7.3.

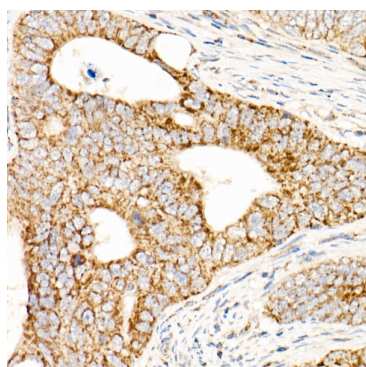
## Validation Data



Immunoprecipitation analysis of 300 µg extracts of HeLa cells using 3 µg AFG3L2 antibody (A15393). Western blot was performed from the immunoprecipitate using AFG3L2 antibody (A15393) at a dilution of 1:1000.



Western blot analysis of various lysates, using AFG3L2 Rabbit pAb (A15393) at 1:500 dilution. Secondary antibody: HRP-conjugated Goat anti-Rabbit IgG (H+L) (AS014) at 1:10000 dilution. Lysates/proteins: 25µg per lane. Blocking buffer: 3% nonfat dry milk in TBST. Detection: ECL Basic Kit (RM00020). Exposure time: 30s.



Immunohistochemistry analysis of paraffin-embedded Human colon carcinoma using AFG3L2 Rabbit pAb (A15393) at dilution of 1:50 (40x lens). High pressure antigen retrieval performed with 0.01M Citrate buffer (pH 6.0) prior to IHC staining.