

NFAT2 Rabbit pAb

Catalog No.: A1539 **47 Publications**

Basic Information

Observed MW

101kDa

Calculated MW

101kDa

Category

Primary antibody

Applications

WB, IHC-P, IF/ICC, ELISA

Cross-Reactivity

Human, Mouse, Rat

Background

The product of this gene is a component of the nuclear factor of activated T cells DNA-binding transcription complex. This complex consists of at least two components: a preexisting cytosolic component that translocates to the nucleus upon T cell receptor (TCR) stimulation, and an inducible nuclear component. Proteins belonging to this family of transcription factors play a central role in inducible gene transcription during immune response. The product of this gene is an inducible nuclear component. It functions as a major molecular target for the immunosuppressive drugs such as cyclosporin A. Multiple alternatively spliced transcript variants encoding distinct isoforms have been identified for this gene. Different isoforms of this protein may regulate inducible expression of different cytokine genes.

Recommended Dilutions

WB 1:500 - 1:1000**IHC-P** 1:50 - 1:200**IF/ICC** 1:50 - 1:200**ELISA** Recommended starting concentration is 1 µg/mL. Please optimize the concentration based on your specific assay requirements.

Immunogen Information

Gene ID

4772

Swiss Prot

O95644

Immunogen

Recombinant protein (or fragment). This information is considered to be commercially sensitive.

Synonyms

NFAT2; NFATc; NF-ATC; NF-ATc1.2

Contact

 | 400-999-6126 | cn.market@abclonal.com.cn | www.abclonal.com.cn

Product Information

Source

Rabbit

Isotype

IgG

Purification

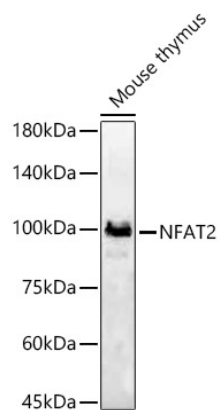
Affinity purification

Storage

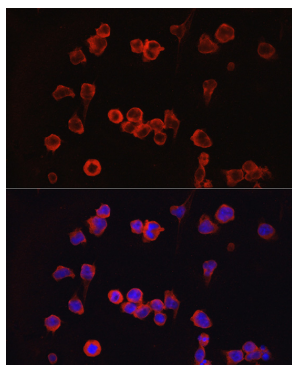
Store at -20°C. Avoid freeze / thaw cycles.

Buffer: PBS containing 50% glycerol, preserved with proclin300 or sodium azide (as specified on the Certificate of Analysis), pH 7.3.

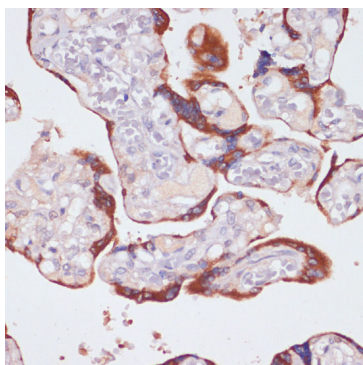
Validation Data



Western blot analysis of lysates from Mouse thymus, using NFAT2 Rabbit pAb (A1539) at 1:600 dilution. Secondary antibody: HRP-conjugated Goat anti-Rabbit IgG (H+L) (AS014) at 1:10000 dilution. Lysates/proteins: 25µg per lane. Blocking buffer: 3% nonfat dry milk in TBST. Detection: ECL Basic Kit (RM00020). Exposure time: 180s.



Immunofluorescence analysis of Jurkat cells using NFAT2 Rabbit pAb (A1539) at dilution of 1:100 (40x lens). Secondary antibody: Cy3-conjugated Goat anti-Rabbit IgG (H+L) (AS007) at 1:500 dilution. Blue: DAPI for nuclear staining.



Immunohistochemistry analysis of paraffin-embedded Human placenta using NFAT2 Rabbit pAb (A1539) at dilution of 1:200 (40x lens). Microwave antigen retrieval performed with 0.01M PBS Buffer (pH 7.2) prior to IHC staining.