

BMS1 Rabbit pAb

Catalog No.: A15367 **1 Publications**

Basic Information

Observed MW

146kDa

Calculated MW

146kDa

Category

Primary antibody

Applications

WB, ELISA

Cross-Reactivity

Human, Mouse, Rat

Background

This gene likely encodes a ribosome assembly protein. A similar protein in yeast functions in 35S-rRNA processing, which includes a series of cleavage steps critical for formation of 40S ribosomes. Related pseudogenes exist on chromosomes 2, 9, 10, 15, 16, and 22.

Recommended Dilutions

WB 1:200 - 1:2000

ELISA Recommended starting concentration is 1 µg/mL. Please optimize the concentration based on your specific assay requirements.

Immunogen Information

Gene ID

9790

Swiss Prot

Q14692

Immunogen

Recombinant protein (or fragment). This information is considered to be commercially sensitive.

Synonyms

ACC; BMS1L; BMS1

Contact

☎ | 400-999-6126

✉ | cn.market@abclonal.com.cn

🌐 | www.abclonal.com.cn

Product Information

Source

Rabbit

Isotype

IgG

Purification

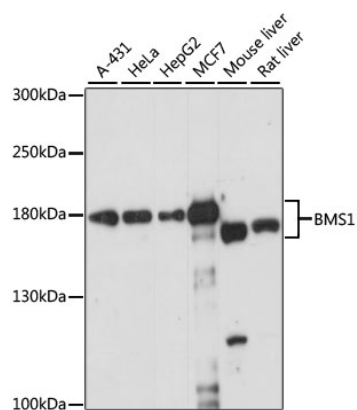
Affinity purification

Storage

Store at -20°C. Avoid freeze / thaw cycles.

Buffer: PBS with 0.01% thimerosal, 50% glycerol, pH7.3.

Validation Data



Western blot analysis of various lysates using BMS1 Rabbit pAb (A15367) at 1:1000 dilution.
Secondary antibody: HRP-conjugated Goat anti-Rabbit IgG (H+L) (AS014) at 1:10000 dilution.
Lysates/proteins: 25µg per lane.
Blocking buffer: 3% nonfat dry milk in TBST.
Detection: ECL Enhanced Kit (RM00021).
Exposure time: 15s.