

# KCNU1 Rabbit pAb

Catalog No.: A14967 **3 Publications**

## Basic Information

### Observed MW

130kDa

### Calculated MW

130kDa

### Category

Primary antibody

### Applications

WB,ELISA

### Cross-Reactivity

Rat

## Background

This gene encodes a member of the potassium channel family of proteins. The encoded voltage-gated ion channel allows the outward flow of potassium ions during plasma membrane hyperpolarization in sperm. Opening of this channel may be regulated by calcium ion levels. Homozygous knockout mice that lack the related mouse gene exhibit male sterility. Alternative splicing results in multiple transcript variants.

## Recommended Dilutions

**WB** 1:500 - 1:2000

**ELISA** Recommended starting concentration is 1 µg/mL. Please optimize the concentration based on your specific assay requirements.

## Immunogen Information

### Gene ID

157855

### Swiss Prot

A8MYU2

### Immunogen

Recombinant protein (or fragment). This information is considered to be commercially sensitive.

### Synonyms

KCa5; Slo3; KCNMC1; KCa5.1; Kcnma3; SPGF79; KCNU1

## Contact

 | 400-999-6126

 | [cn.market@abclonal.com.cn](mailto:cn.market@abclonal.com.cn)

 | [www.abclonal.com.cn](http://www.abclonal.com.cn)

## Product Information

### Source

Rabbit

### Isotype

IgG

### Purification

Affinity purification

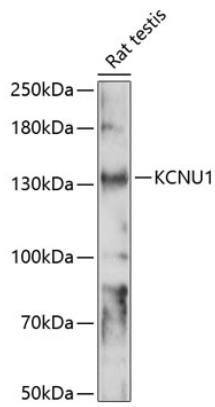
### Storage

Store at -20°C. Avoid freeze / thaw cycles.

Buffer: PBS with 0.01% thimerosal, 50% glycerol, pH7.3.

## Validation Data

---



Western blot analysis of lysates from rat testis, using KCNU1 Rabbit pAb (A14967) at 1:1000 dilution.  
Secondary antibody: HRP-conjugated Goat anti-Rabbit IgG (H+L) (AS014) at 1:10000 dilution.  
Lysates/proteins: 25µg per lane.  
Blocking buffer: 3% nonfat dry milk in TBST.  
Detection: ECL Enhanced Kit (RM00021).  
Exposure time: 90s.