

# SLC7A1 Rabbit pAb

Catalog No.: A14784 **4 Publications**

## Basic Information

### Observed MW

68 kDa

### Calculated MW

68 kDa

### Category

Primary antibody

### Applications

WB, IHC-P, ELISA

### Cross-Reactivity

Human, Mouse, Rat

## Background

Enables L-arginine transmembrane transporter activity and L-histidine transmembrane transporter activity. Involved in amino acid transport. Located in membrane. Part of apical plasma membrane; basolateral plasma membrane; and protein-containing complex.

## Recommended Dilutions

**WB** 1:500 - 1:5000

**IHC-P** 1:50 - 1:200

**ELISA** Recommended starting concentration is 1 µg/mL. Please optimize the concentration based on your specific assay requirements.

## Immunogen Information

### Gene ID

6541

### Swiss Prot

P30825

### Immunogen

Synthetic peptide. This information is considered to be commercially sensitive.

### Synonyms

ERR; ATRC1; CAT-1; HCAT1; REC1L; SLC7A1

## Contact

☎ | 400-999-6126

✉ | [cn.market@abclonal.com.cn](mailto:cn.market@abclonal.com.cn)

🌐 | [www.abclonal.com.cn](http://www.abclonal.com.cn)

## Product Information

### Source

Rabbit

### Isotype

IgG

### Purification

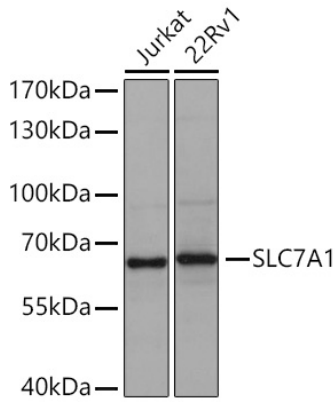
Affinity purification

### Storage

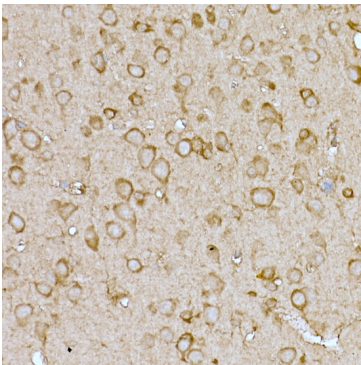
Store at -20°C. Avoid freeze / thaw cycles.

Buffer: PBS containing 50% glycerol, preserved with proclin300 or sodium azide (as specified on the Certificate of Analysis), pH 7.3.

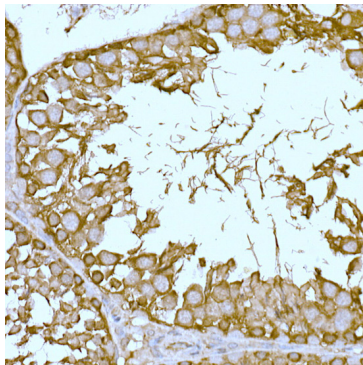
## Validation Data



Western blot analysis of various lysates using SLC7A1 Rabbit pAb (A14784) at 1:1000 dilution incubated overnight at 4°C.  
Secondary antibody: HRP-conjugated Goat anti-Rabbit IgG (H+L) (AS014) at 1:10000 dilution.  
Lysates/proteins: 25 µg per lane.  
Blocking buffer: 3% nonfat dry milk in TBST.  
Detection: ECL Basic Kit (RM00020).  
Exposure time: 60 s.



Immunohistochemistry analysis of paraffin-embedded Mouse brain using SLC7A1 Rabbit pAb (A14784) at dilution of 1:100 (40x lens). High pressure antigen retrieval performed with 0.01M Citrate buffer (pH 6.0) prior to IHC staining.



Immunohistochemistry analysis of paraffin-embedded Rat testis using SLC7A1 Rabbit pAb (A14784) at dilution of 1:100 (40x lens). High pressure antigen retrieval performed with 0.01M Citrate buffer (pH 6.0) prior to IHC staining.