

KDM7A Rabbit pAb

Catalog No.: A14692 **3 Publications**

Basic Information

Observed MW

106kDa

Calculated MW

106kDa

Category

Primary antibody

Applications

ELISA, WB

Cross-Reactivity

Human

Background

Enables histone H3-methyl-lysine-9 demethylase activity and histone H3-tri/di-methyl-lysine-27 demethylase activity. Involved in histone H3-K27 demethylation; histone H3-K9 demethylation; and positive regulation of transcription, DNA-templated. Predicted to be located in nucleolus and nucleoplasm. Human ortholog(s) of this gene implicated in melanoma. Orthologous to human KDM7A (lysine demethylase 7A).

Recommended Dilutions

WB 1:500 - 1:1000

Immunogen Information

Gene ID

338523

Swiss Prot

Q3UWM4

Immunogen

Recombinant fusion protein containing a sequence corresponding to amino acids 100-200 of mouse KDM7A (NP_001028602.2).

Synonyms

Jhdm1d; mKIAA1718; A630082K20Rik; KDM7A

Contact

 | 400-999-6126

 | cn.market@abclonal.com.cn

 | www.abclonal.com.cn

Product Information

Source

Rabbit

Isotype

IgG

Purification

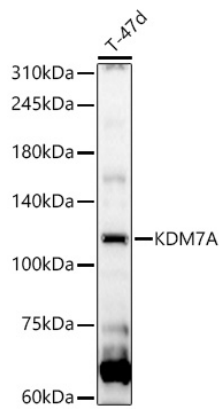
Affinity purification

Storage

Store at -20°C. Avoid freeze / thaw cycles.

Buffer: PBS with 0.02% sodium azide, 50% glycerol, pH 7.3.

Validation Data



Western blot analysis of T-47d, using KDM7A Rabbit pAb (A14692) at 1:1000 dilution.
Secondary antibody: HRP Goat Anti-Rabbit IgG (H+L) (AS014) at 1:10000 dilution.
Lysates/proteins: 25µg per lane.
Blocking buffer: 3% nonfat dry milk in TBST.
Detection: ECL Basic Kit (RM00020).
Exposure time: 30s.