

SLC47A1 Rabbit pAb

Catalog No.: A14559 **2 Publications**

Basic Information

Observed MW

62kDa

Calculated MW

62kDa

Category

Primary antibody

Applications

ELISA, WB

Cross-Reactivity

Human, Rat

Background

This gene is located within the Smith-Magenis syndrome region on chromosome 17. It encodes a protein of unknown function.

Recommended Dilutions

WB 1:500 - 1:1000

Immunogen Information

Gene ID

55244

Swiss Prot

Q96FL8

Immunogen

Recombinant fusion protein containing a sequence corresponding to amino acids 460-550 of human SLC47A1 (NP_060712.2).

Synonyms

MATE1; SLC47A1

Contact

 | 400-999-6126

 | cn.market@abclonal.com.cn

 | www.abclonal.com.cn

Product Information

Source

Rabbit

Isotype

IgG

Purification

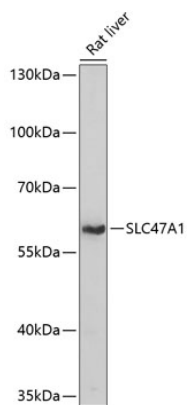
Affinity purification

Storage

Store at -20°C. Avoid freeze / thaw cycles.

Buffer: PBS with 0.01% thimerosal, 50% glycerol, pH7.3.

Validation Data



Western blot analysis of lysates from rat liver, using SLC47A1 Rabbit pAb (A14559) at 1:1000 dilution.
Secondary antibody: HRP Goat Anti-Rabbit IgG (H+L) (AS014) at 1:10000 dilution.
Lysates/proteins: 25µg per lane.
Blocking buffer: 3% nonfat dry milk in TBST.
Detection: ECL Basic Kit (RM00020).
Exposure time: 30s.