

Mesothelin Rabbit pAb

Catalog No.: A14099

Basic Information

Observed MW

46-48kDa/70kDa

Calculated MW

69kDa

Category

Primary antibody

Applications

ELISA, WB, IHC-P, IF/ICC

Cross-Reactivity

Human, Mouse, Rat

Background

This gene encodes a preproprotein that is proteolytically processed to generate two protein products, megakaryocyte potentiating factor and mesothelin. Megakaryocyte potentiating factor functions as a cytokine that can stimulate colony formation of bone marrow megakaryocytes. Mesothelin is a glycosylphosphatidylinositol-anchored cell-surface protein that may function as a cell adhesion protein. This protein is overexpressed in epithelial mesotheliomas, ovarian cancers and in specific squamous cell carcinomas. Alternative splicing results in multiple transcript variants, at least one of which encodes an isoform that is proteolytically processed.

Recommended Dilutions

WB	1:1000 - 1:5000
IHC-P	1:50 - 1:200
IF/ICC	1:100 - 1:500

Immunogen Information

Gene ID

10232

Swiss Prot

Q13421

Immunogen

Recombinant fusion protein containing a sequence corresponding to amino acids 296-606 of human Mesothelin (NP_037536.2).

Synonyms

MPF; SMRP; Mesothelin

Contact

☎	400-999-6126
✉	cn.market@abclonal.com.cn
🌐	www.abclonal.com.cn

Product Information

Source

Rabbit

Isotype

IgG

Purification

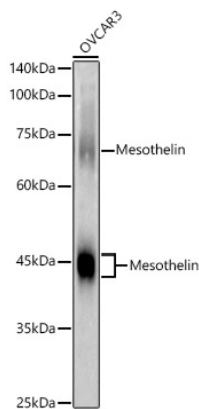
Affinity purification

Storage

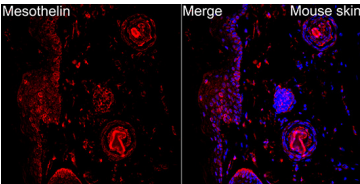
Store at -20°C. Avoid freeze / thaw cycles.

Buffer: PBS with 0.05% proclin300, 50% glycerol, pH7.3.

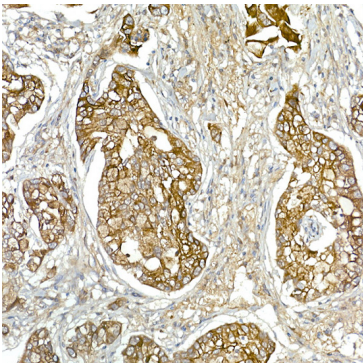
Validation Data



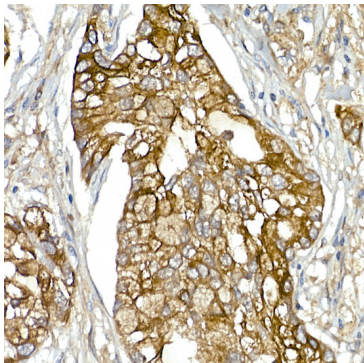
Western blot analysis of lysates from OVCAR3 cells, using Mesothelin Rabbit pAb (A14099) at 1:2000 dilution.
Secondary antibody: HRP Goat Anti-Rabbit IgG (H+L) (AS014) at 1:10000 dilution.
Lysates/proteins: 25µg per lane.
Blocking buffer: 3% nonfat dry milk in TBST.
Detection: ECL Basic Kit (RM00020).
Exposure time: 10s.



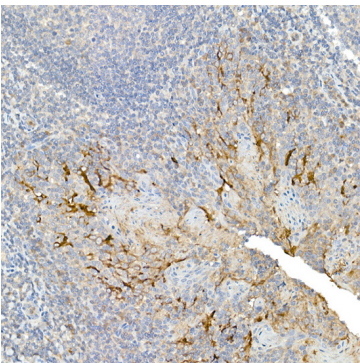
Immunofluorescence analysis of Mouse skin tissue using Mesothelin Rabbit pAb (A14099) at a dilution of 1:200 (40x lens). Secondary antibody: Cy3-conjugated Goat anti-Rabbit IgG (H+L)(AS007) at 1:500 dilution. Blue: DAPI for nuclear staining. High pressure antigen retrieval performed with 0.01M Citrate Buffer(pH 6.0) prior to IF staining.



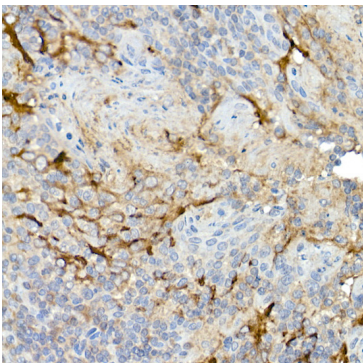
Immunohistochemistry analysis of Mesothelin in paraffin-embedded human lung cancer[200X] using Mesothelin Rabbit pAb (A14099) at dilution of 1:50 (40x lens).Perform high pressure antigen retrieval with 10 mM citrate buffer pH 6.0 before commencing with IHC staining protocol.



Immunohistochemistry analysis of Mesothelin in paraffin-embedded human lung cancer[400X] using Mesothelin Rabbit pAb (A14099) at dilution of 1:50 (40x lens).Perform high pressure antigen retrieval with 10 mM citrate buffer pH 6.0 before commencing with IHC staining protocol.



Immunohistochemistry analysis of Mesothelin in paraffin-embedded Human tonsil[200X] using Mesothelin Rabbit pAb (A14099) at dilution of 1:50 (40x lens).Perform high pressure antigen retrieval with 10 mM citrate buffer pH 6.0 before commencing with IHC staining protocol.



Immunohistochemistry analysis of Mesothelin in paraffin-embedded Human tonsil[400X] using Mesothelin Rabbit pAb (A14099) at dilution of 1:50 (40x lens).Perform high pressure antigen retrieval with 10 mM citrate buffer pH 6.0 before commencing with IHC staining protocol.