

# Apolipoprotein C3 Rabbit pAb

Catalog No.: A1409 **2 Publications**

## Basic Information

**Observed MW**

11kDa

**Calculated MW**

11kDa

**Category**

Primary antibody

**Applications**

WB, IHC-P, IF/ICC, ELISA

**Cross-Reactivity**

Human, Mouse, Rat

## Background

This gene encodes a protein component of triglyceride (TG)-rich lipoproteins (TRLs) including very low density lipoproteins (VLDL), high density lipoproteins (HDL) and chylomicrons. The encoded protein plays a role in the metabolism of these TRLs through multiple modes. This protein has been shown to promote the secretion of VLDL1, inhibit lipoprotein lipase enzyme activity, and delay catabolism of TRL remnants. Mutations in this gene are associated with low plasma triglyceride levels and reduced risk of ischemic cardiovascular disease, and hyperalphalipoproteinemia, which is characterized by elevated levels of high density lipoprotein (HDL) and HDL cholesterol in human patients. This gene and other related genes comprise an apolipoprotein gene cluster on chromosome 11.

## Recommended Dilutions

**WB** 1:500 - 1:1000**IHC-P** 1:100 - 1:200**IF/ICC** 1:50 - 1:200

**ELISA** Recommended starting concentration is 1 µg/mL. Please optimize the concentration based on your specific assay requirements.

## Immunogen Information

**Gene ID**

345

**Swiss Prot**

P02656

**Immunogen**

Synthetic peptide. This information is considered to be commercially sensitive.

**Synonyms**

Apo-C3; ApoC-3; APOCIII; Apolipoprotein C3

## Contact

 | 400-999-6126 | [cn.market@abclonal.com.cn](mailto:cn.market@abclonal.com.cn) | [www.abclonal.com.cn](http://www.abclonal.com.cn)

## Product Information

**Source**

Rabbit

**Isotype**

IgG

**Purification**

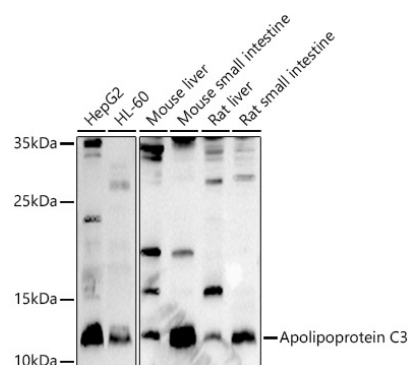
Affinity purification

**Storage**

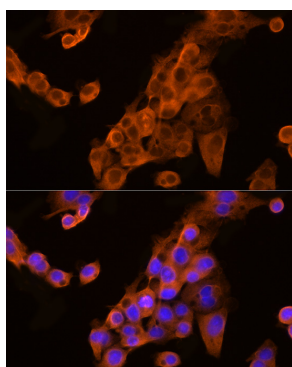
Store at -20°C. Avoid freeze / thaw cycles.

Buffer: PBS with 0.05% proclin300, 50% glycerol, pH7.3.

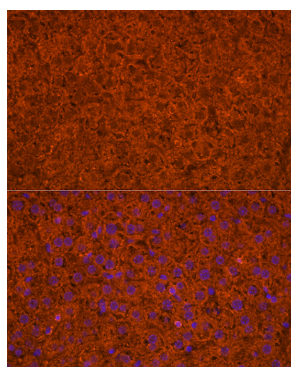
## Validation Data



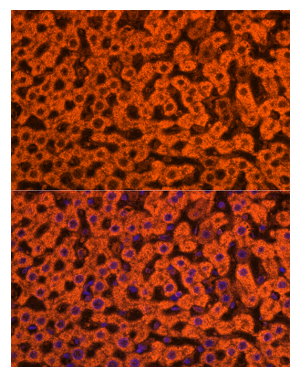
Western blot analysis of various lysates using Apolipoprotein C3 Rabbit pAb (A1409) at 1:1000 dilution. Secondary antibody: HRP-conjugated Goat anti-Rabbit IgG (H+L) (AS014) at 1:10000 dilution. Lysates/proteins: 25µg per lane. Blocking buffer: 3% nonfat dry milk in TBST. Detection: ECL Basic Kit (RM00020). Exposure time: 90s.



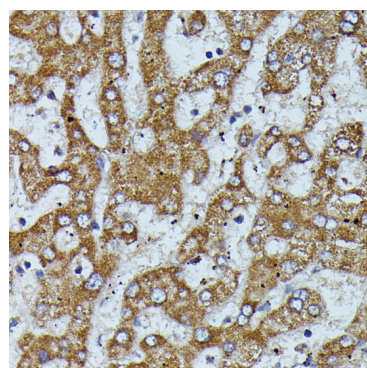
Immunofluorescence analysis of HepG2 cells using Apolipoprotein C3 Rabbit pAb (A1409) at dilution of 1:200 (40x lens). Secondary antibody: Cy3-conjugated Goat anti-Rabbit IgG (H+L) (AS007) at 1:500 dilution. Blue: DAPI for nuclear staining.



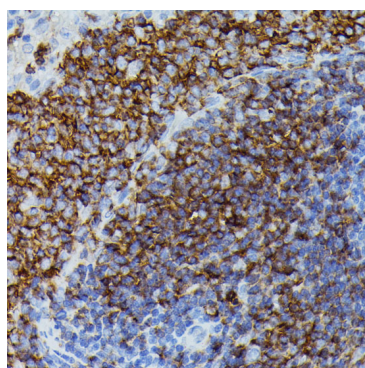
Immunofluorescence analysis of paraffin-embedded mouse liver using Apolipoprotein C3 Rabbit pAb (A1409) at dilution of 1:200 (40x lens). Secondary antibody: Cy3-conjugated Goat anti-Rabbit IgG (H+L) (AS007) at 1:500 dilution. Blue: DAPI for nuclear staining.



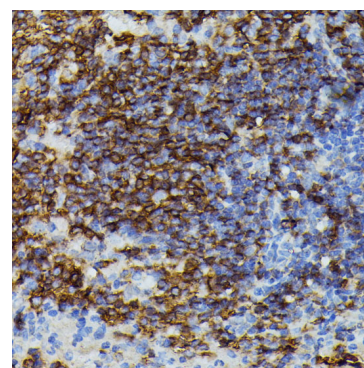
Immunofluorescence analysis of paraffin-embedded rat liver using Apolipoprotein C3 Rabbit pAb (A1409) at dilution of 1:200 (40x lens). Secondary antibody: Cy3-conjugated Goat anti-Rabbit IgG (H+L) (AS007) at 1:500 dilution. Blue: DAPI for nuclear staining.



Immunohistochemistry analysis of paraffin-embedded Human liver using Apolipoprotein C3 Rabbit pAb (A1409) at dilution of 1:100 (40x lens). Microwave antigen retrieval performed with 0.01M PBS Buffer (pH 7.2) prior to IHC staining.



Immunohistochemistry analysis of paraffin-embedded Rat spleen using Apolipoprotein C3 Rabbit pAb (A1409) at dilution of 1:100 (40x lens). Microwave antigen retrieval performed with 0.01M PBS Buffer (pH 7.2) prior to IHC staining.



Immunohistochemistry analysis of paraffin-embedded Mouse spleen using Apolipoprotein C3 Rabbit pAb (A1409) at dilution of 1:100 (40x lens). Microwave antigen retrieval performed with 0.01M PBS Buffer (pH 7.2) prior to IHC staining.