

ZBP1 Rabbit pAb

Catalog No.: A13899SP **6 Publications**

Basic Information

Observed MW

58 kDa

Calculated MW

15-48 kDa

Category

Primary antibody

Applications

WB,IP,IF/ICC,IHC-P,ELISA

Cross-Reactivity

Human, Mouse

Background

This gene encodes a Z-DNA binding protein. The encoded protein plays a role in the innate immune response by binding to foreign DNA and inducing type-I interferon production. Alternatively spliced transcript variants encoding multiple isoforms have been observed for this gene.

Recommended Dilutions

WB 1:5000 - 1:10000

IP 0.5 µg - 4 µg antibody for
200 µg - 400 µg extracts
of whole cells

IF/ICC 1:200 - 1:400

IHC-P 1:200 - 1:800

ELISA Recommended starting concentration is 1 µg/mL. Please optimize the concentration based on your specific assay requirements. For high-ratio antibody dilutions ($\geq 1:10000$) a sequential dilution method is strongly recommended to ensure measurement accuracy.

Immunogen Information

Gene ID

81030/58203

Swiss Prot

Q9H171/Q9QY24

Immunogen

This information is considered to be commercially sensitive.

Synonyms

DAI; DLM1; DLM-1; C20orf183; ZBP1

Product Information

Source

Rabbit

Isotype

IgG

Purification

Affinity purification

Storage

Store at -20°C. Avoid freeze / thaw cycles.

Buffer: PBS, pH 7.3, containing 50% glycerol. Preserved with Proclin300 or sodium azide.

May contain 0.05% BSA as specified on the Certificate of Analysis.

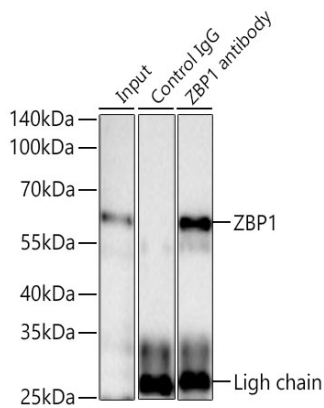
Contact

 | 400-999-6126

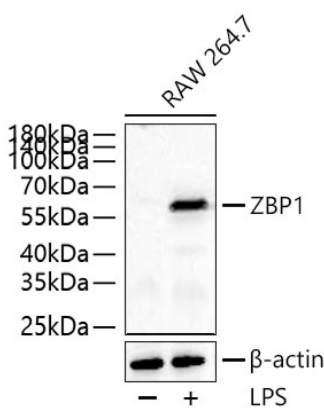
 | cn.market@abclonal.com.cn

 | www.abclonal.com.cn

Validation Data



Immunoprecipitation of ZBP1 from 300 μ g extracts of RAW 264.7 cells treated with LPS (1 μ g/ml, 7 h) was performed using 1 μ g of ZBP1 Rabbit pAb (A13899SP). Rabbit Control IgG (AC005) was used to precipitate the Control IgG sample. IP samples were eluted with 1x non-reducing Laemmli Buffer. The Input lane represents 10% of the total input. Western blot analysis of immunoprecipitates was conducted using ZBP1 Rabbit pAb (A13899SP) at a dilution of 1:5000.



Western blot analysis of lysates from RAW 264.7 cells using ZBP1 Rabbit pAb (A13899SP) at 1:10000 dilution incubated at room temperature for 1.5 hours. RAW 264.7 cells were treated with LPS (1 μ g/ml) at 37°C for 24 hours.

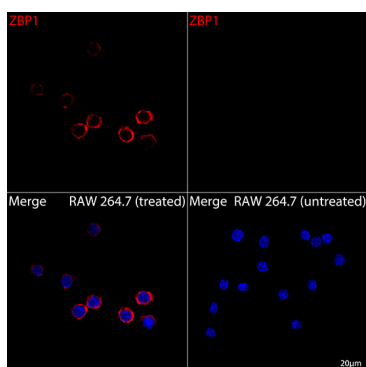
Secondary antibody: HRP-conjugated Goat anti-Rabbit IgG (H+L) (AS014) at 1:10000 dilution.

Lysates/proteins: 30 μ g per lane.

Blocking buffer: 3% nonfat dry milk in TBST.

Detection: ECL Basic Kit (RM00020).

Exposure time: 90 s.



Confocal imaging of RAW 264.7 cells (treated with LPS) and RAW 264.7 cells (untreated) using ZBP1 Rabbit pAb (A13899SP, dilution 1:200) followed by a further incubation with Cy3-conjugated Goat anti-Rabbit IgG (H+L) (AS007, dilution 1:500) (Red). DAPI was used for nuclear staining (Blue). Objective: 100x.