

EZH2/KMT6 Rabbit pAb

Catalog No.: A13867 **2 Publications**

Basic Information

Observed MW

105kDa

Calculated MW

85kDa

Category

Primary antibody

Applications

ELISA, WB, IP

Cross-Reactivity

Human

Background

This gene encodes a member of the Polycomb-group (PcG) family. PcG family members form multimeric protein complexes, which are involved in maintaining the transcriptional repressive state of genes over successive cell generations. This protein associates with the embryonic ectoderm development protein, the VAV1 oncoprotein, and the X-linked nuclear protein. This protein may play a role in the hematopoietic and central nervous systems. Multiple alternatively spliced transcript variants encoding distinct isoforms have been identified for this gene.

Recommended Dilutions

WB 1:500 - 1:2000

IP 0.5µg-4µg antibody for
200µg-400µg extracts of
whole cells

Immunogen Information

Gene ID

2146

Swiss Prot

Q15910

Immunogen

Recombinant fusion protein containing a sequence corresponding to amino acids 50-150 of human EZH2/KMT6 (NP_001190176.1).

Synonyms

WVS; ENX1; KMT6; WVS2; ENX-1; EZH2b; KMT6A; EZH2/KMT6

Contact

☎ | 400-999-6126

✉ | cn.market@abclonal.com.cn

🌐 | www.abclonal.com.cn

Product Information

Source

Rabbit

Isotype

IgG

Purification

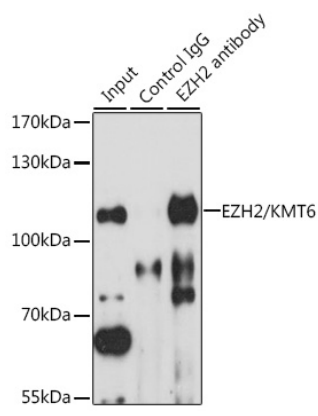
Affinity purification

Storage

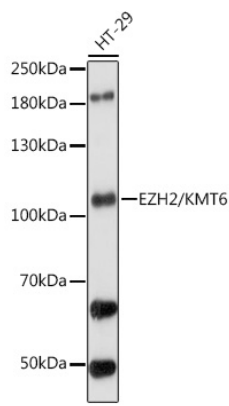
Store at -20°C. Avoid freeze / thaw cycles.

Buffer: PBS with 0.01% thimerosal, 50% glycerol, pH7.3.

Validation Data



Immunoprecipitation analysis of 200 µg extracts of HT-29 cells, using 3 µg EZH2/KMT6 antibody (A13867). Western blot was performed from the immunoprecipitate using EZH2/KMT6 antibody (A13867) at a dilution of 1:1000.



Western blot analysis of lysates from HT-29 cells, using EZH2/KMT6 Rabbit pAb (A13867) at 1:1000 dilution.
Secondary antibody: HRP Goat Anti-Rabbit IgG (H+L) (AS014) at 1:10000 dilution.
Lysates/proteins: 25µg per lane.
Blocking buffer: 3% nonfat dry milk in TBST.
Detection: ECL Basic Kit (RM00020).
Exposure time: 10s.