

GNA12 Rabbit pAb

Catalog No.: A13740

Basic Information

Observed MW

44kDa

Calculated MW

44kDa

Category

Primary antibody

Applications

WB,IHC-P,ELISA

Cross-Reactivity

Human, Mouse, Rat

Background

Predicted to enable D5 dopamine receptor binding activity; G-protein beta/gamma-subunit complex binding activity; and GTPase activity. Involved in regulation of TOR signaling and regulation of proteasomal ubiquitin-dependent protein catabolic process. Located in focal adhesion.

Recommended Dilutions

WB 1:500 - 1:2000

IHC-P 1:50 - 1:200

ELISA Recommended starting concentration is 1 µg/mL. Please optimize the concentration based on your specific assay requirements.

Immunogen Information

Gene ID

2768

Swiss Prot

Q03113

Immunogen

Recombinant protein (or fragment). This information is considered to be commercially sensitive.

Synonyms

RMP; gep; NN3; HG1M1; GNA12

Contact

 | 400-999-6126

 | cn.market@abclonal.com.cn

 | www.abclonal.com.cn

Product Information

Source

Rabbit

Isotype

IgG

Purification

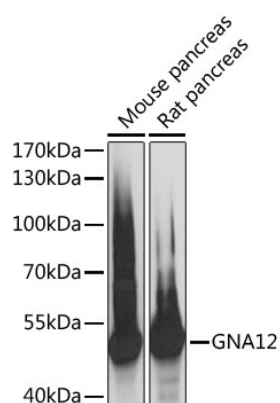
Affinity purification

Storage

Store at -20°C. Avoid freeze / thaw cycles.

Buffer: PBS with 0.01% thimerosal, 50% glycerol, pH7.3.

Validation Data



Western blot analysis of various lysates using GNA12 Rabbit pAb (A13740) at 1:3000 dilution.
Secondary antibody: HRP-conjugated Goat anti-Rabbit IgG (H+L) (AS014) at 1:10000 dilution.
Lysates/proteins: 25µg per lane.
Blocking buffer: 3% nonfat dry milk in TBST.
Detection: ECL Basic Kit (RM00020).
Exposure time: 1s.