

Mitofusin 2 Rabbit pAb

Catalog No.: A13606 **3 Publications**

Basic Information

Observed MW

80kDa

Calculated MW

68kDa/86kDa

Category

Primary antibody

Applications

WB, IHC-P, ELISA

Cross-Reactivity

Human, Mouse, Rat

Background

Predicted to enable several functions, including GTP binding activity; GTPase activity; and enzyme binding activity. Involved in mitochondrial fusion; parkin-mediated stimulation of mitophagy in response to mitochondrial depolarization; and positive regulation of cold-induced thermogenesis. Acts upstream of or within blastocyst formation and camera-type eye morphogenesis. Located in microtubule cytoskeleton and mitochondrion. Is expressed in several structures, including brain; early conceptus; eye; heart; and oocyte. Used to study Charcot-Marie-Tooth disease type 2A2A. Human ortholog(s) of this gene implicated in Charcot-Marie-Tooth disease; Charcot-Marie-Tooth disease type 2A2A; Charcot-Marie-Tooth disease type 2A2B; and Charcot-Marie-Tooth disease type 6. Orthologous to human MFN2 (mitofusin 2).

Recommended Dilutions

WB 1:500 - 1:1000

IHC-P 1:50 - 1:200

ELISA Recommended starting concentration is 1 µg/mL. Please optimize the concentration based on your specific assay requirements.

Immunogen Information

Gene ID

170731

Swiss Prot

Immunogen

Recombinant protein (or fragment). This information is considered to be commercially sensitive.

Synonyms

Fzo; D630023P19Rik; Mitofusin 2

Contact

☎ | 400-999-6126

✉ | cn.market@abclonal.com.cn

🌐 | www.abclonal.com.cn

Product Information

Source

Rabbit

Isotype

IgG

Purification

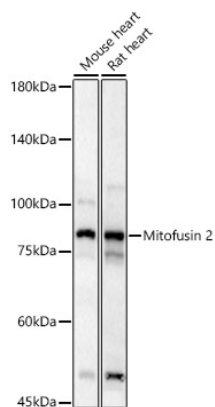
Affinity purification

Storage

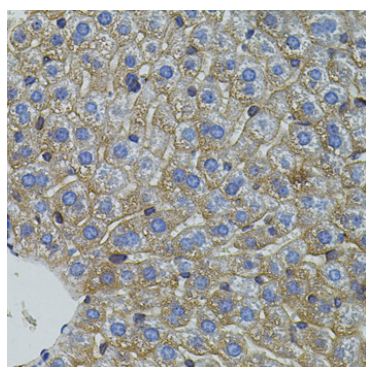
Store at -20°C. Avoid freeze / thaw cycles.

Buffer: PBS containing 50% glycerol, preserved with proclin300 or sodium azide (as specified on the Certificate of Analysis), pH 7.3.

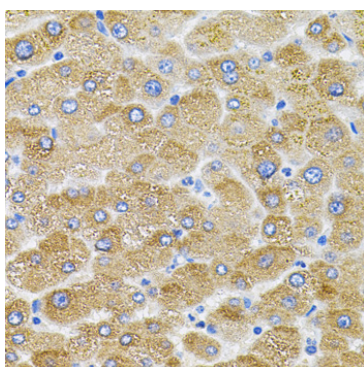
Validation Data



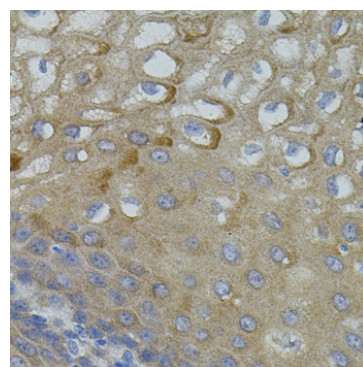
Western blot analysis of various lysates, using Mitofusin 2 Rabbit pAb (A13606) at 1:1000 dilution.
Secondary antibody: HRP-conjugated Goat anti-Rabbit IgG (H+L) (AS014) at 1:10000 dilution.
Lysates/proteins: 25µg per lane.
Blocking buffer: 3% nonfat dry milk in TBST.
Detection: ECL Basic Kit (RM00020).
Exposure time: 60s.



Immunohistochemistry analysis of paraffin-embedded Mouse liver using Mitofusin 2 Rabbit pAb (A13606) (40x lens). Microwave antigen retrieval performed with 0.01M PBS Buffer (pH 7.2) prior to IHC staining.



Immunohistochemistry analysis of paraffin-embedded Human liver tissue using Mitofusin 2 Rabbit pAb (A13606) (40x lens). Microwave antigen retrieval performed with 0.01M PBS Buffer (pH 7.2) prior to IHC staining.



Immunohistochemistry analysis of paraffin-embedded Human esophagus using Mitofusin 2 Rabbit pAb (A13606) (40x lens). Microwave antigen retrieval performed with 0.01M PBS Buffer (pH 7.2) prior to IHC staining.