

IGF2BP1/IMP1 Rabbit pAb

Catalog No.: A13581 **1 Publications**

Basic Information

Observed MW

70kDa

Calculated MW

63kDa

Category

Primary antibody

Applications

WB, IF/ICC, IP, ELISA

Cross-Reactivity

Human, Mouse, Rat

Background

This gene encodes a member of the insulin-like growth factor 2 mRNA-binding protein family. The protein encoded by this gene contains four K homology domains and two RNA recognition motifs. It functions by binding to the mRNAs of certain genes, including insulin-like growth factor 2, beta-actin and beta-transducin repeat-containing protein, and regulating their translation. Two transcript variants encoding different isoforms have been found for this gene.

Recommended Dilutions

WB 1:500 - 1:2000

IF/ICC 1:50 - 1:200

IP 0.5µg-4µg antibody for
200µg-400µg extracts of
whole cells

ELISA Recommended starting
concentration is 1 µg/mL.
Please optimize the
concentration based on
your specific assay
requirements.

Immunogen Information

Gene ID

10642

Swiss Prot

Q9NZI8

Immunogen

Synthetic peptide. This information is considered to be commercially sensitive.

Synonyms

IMP1; ZBP1; CRDBP; IMP-1; CRD-BP; VICKZ1; IGF2BP1/IMP1

Contact

☎ | 400-999-6126

✉ | cn.market@abclonal.com.cn

🌐 | www.abclonal.com.cn

Product Information

Source

Rabbit

Isotype

IgG

Purification

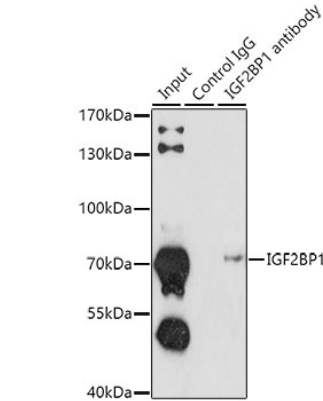
Affinity purification

Storage

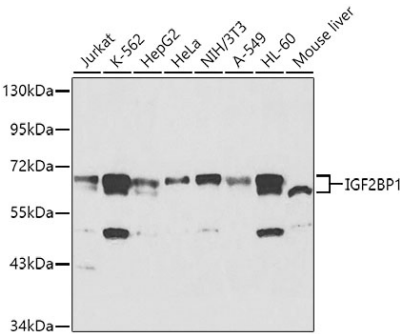
Store at -20°C. Avoid freeze / thaw cycles.

Buffer: PBS with 0.02% sodium azide, 50% glycerol, pH7.3.

Validation Data



Immunoprecipitation analysis of 200 µg extracts of K562 cells using 1 µg IGF2BP1/IMP1 antibody (A13581). Western blot was performed from the immunoprecipitate using IGF2BP1/IMP1 antibody (A13581) at a dilution of 1:1000.



Western blot analysis of various lysates using IGF2BP1/IMP1 Rabbit pAb (A13581) at 1:1000 dilution. Secondary antibody: HRP-conjugated Goat anti-Rabbit IgG (H+L) (AS014) at 1:10000 dilution. Lysates/proteins: 25µg per lane. Blocking buffer: 3% nonfat dry milk in TBST.