

NOTCH3 Rabbit pAb

Catalog No.: A13522 **5 Publications**

Basic Information

Observed MW

100 kDa(NTM)/270 kDa(FL)

Calculated MW

244kDa

Category

Primary antibody

Applications

WB,IHC-P,ELISA

Cross-Reactivity

Human, Mouse, Rat

Background

This gene encodes the third discovered human homologue of the *Drosophila melanogaster* type I membrane protein notch. In *Drosophila*, notch interaction with its cell-bound ligands (delta, serrate) establishes an intercellular signalling pathway that plays a key role in neural development. Homologues of the notch-ligands have also been identified in human, but precise interactions between these ligands and the human notch homologues remains to be determined. Mutations in NOTCH3 have been identified as the underlying cause of cerebral autosomal dominant arteriopathy with subcortical infarcts and leukoencephalopathy (CADASIL).

Recommended Dilutions

WB 1:1000 - 1:5000

IHC-P 1:50 - 1:200

ELISA Recommended starting concentration is 1 µg/mL. Please optimize the concentration based on your specific assay requirements.

Immunogen Information

Gene ID

4854

Swiss Prot

Q9UM47

Immunogen

This information is considered to be commercially sensitive.

Synonyms

IMF2; LMNS; CASIL; CADASIL; CADASIL1; NOTCH3

Contact

 | 400-999-6126

 | cn.market@abclonal.com.cn

 | www.abclonal.com.cn

Product Information

Source

Rabbit

Isotype

IgG

Purification

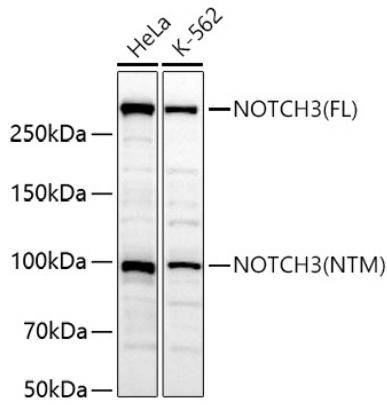
Affinity purification

Storage

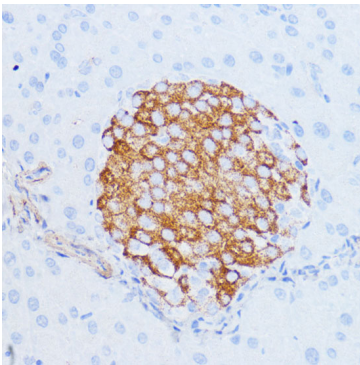
Store at -20°C. Avoid freeze / thaw cycles.

Buffer: PBS containing 50% glycerol, preserved with proclin300 or sodium azide (as specified on the Certificate of Analysis), pH 7.3.

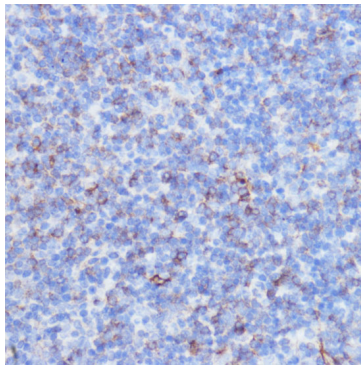
Validation Data



Western blot analysis of various lysates using NOTCH3 Rabbit pAb (A13522) at 1:1000 dilution incubated overnight at 4°C.
Secondary antibody: HRP-conjugated Goat anti-Rabbit IgG (H+L) (AS014) at 1:10000 dilution.
Lysates/proteins: 25 µg per lane.
Blocking buffer: 3% nonfat dry milk in TBST.
Detection: ECL Basic Kit (RM00020).
Exposure time: 30 s.



Immunohistochemistry analysis of paraffin-embedded Mouse pancreas using NOTCH3 Rabbit pAb (A13522) at dilution of 1:100 (40x lens). Microwave antigen retrieval performed with 0.01M PBS Buffer (pH 7.2) prior to IHC staining.



Immunohistochemistry analysis of paraffin-embedded Mouse spleen using NOTCH3 Rabbit pAb (A13522) at dilution of 1:100 (40x lens). Microwave antigen retrieval performed with 0.01M PBS Buffer (pH 7.2) prior to IHC staining.