

# LIPC Rabbit pAb

Catalog No.: A13508

## Basic Information

### Observed MW

Refer to figures

### Calculated MW

56kDa

### Category

Primary antibody

### Applications

ELISA, WB, IF/ICC

### Cross-Reactivity

Human

## Background

Enables phospholipase A1 activity and triglyceride lipase activity. Involved in several processes, including lipid homeostasis; plasma lipoprotein particle remodeling; and triglyceride catabolic process. Located in extracellular space. Implicated in several diseases, including Alzheimer's disease; coronary artery disease; familial combined hyperlipidemia; peripheral vascular disease; and type 2 diabetes mellitus. Biomarker of hyperinsulinism; obesity; and type 1 diabetes mellitus.

## Recommended Dilutions

**WB** 1:500 - 1:2000

**IF/ICC** 1:50 - 1:200

## Immunogen Information

### Gene ID

3990

### Swiss Prot

P11150

### Immunogen

Recombinant fusion protein containing a sequence corresponding to amino acids 280-499 of human LIPC (NP\_000227.2).

### Synonyms

HL; HTGL; LIPH; HDLCQ12; LIPC

## Contact

☎ | 400-999-6126

✉ | [cn.market@abclonal.com.cn](mailto:cn.market@abclonal.com.cn)

🌐 | [www.abclonal.com.cn](http://www.abclonal.com.cn)

## Product Information

### Source

Rabbit

### Isotype

IgG

### Purification

Affinity purification

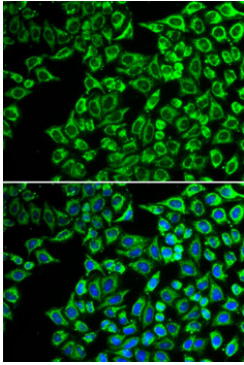
### Storage

Store at -20°C. Avoid freeze / thaw cycles.

Buffer: PBS with 0.02% sodium azide, 50% glycerol, pH7.3.

## Validation Data

---



Immunofluorescence analysis of A549 cells using LIPC antibody (A13508). Blue: DAPI for nuclear staining.