

RbAp46/RBBP7 Rabbit pAb

Catalog No.: A13456 **1 Publications**

Basic Information

Observed MW

48kDa

Calculated MW

48kDa

Category

Primary antibody

Applications

WB, IHC-P, IF/ICC, ELISA, ChIP

Cross-Reactivity

Human, Mouse, Rat

Background

This protein is a ubiquitously expressed nuclear protein and belongs to a highly conserved subfamily of WD-repeat proteins. It is found among several proteins that binds directly to retinoblastoma protein, which regulates cell proliferation. The encoded protein is found in many histone deacetylase complexes, including mSin3 co-repressor complex. It is also present in protein complexes involved in chromatin assembly. This protein can interact with BRCA1 tumor-suppressor gene and may have a role in the regulation of cell proliferation and differentiation. Two transcript variants encoding different isoforms have been found for this gene.

Recommended Dilutions

WB 1:500 - 1:1000

IHC-P 1:50 - 1:200

IF/ICC 1:50 - 1:200

ELISA Recommended starting concentration is 1 µg/mL. Please optimize the concentration based on your specific assay requirements.

ChIP 5µg antibody for 10µg-15µg of Chromatin

Immunogen Information

Gene ID

5931

Swiss Prot

Q16576

Immunogen

Recombinant protein (or fragment). This information is considered to be commercially sensitive.

Synonyms

RbAp46; RbAp46/RBBP7

Product Information

Source

Rabbit

Isotype

IgG

Purification

Affinity purification

Storage

Store at -20°C. Avoid freeze / thaw cycles.

Buffer: PBS containing 50% glycerol, preserved with proclin300 or sodium azide (as specified on the Certificate of Analysis), pH 7.3.

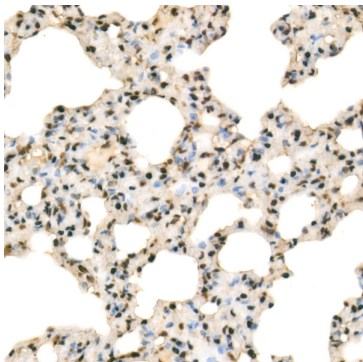
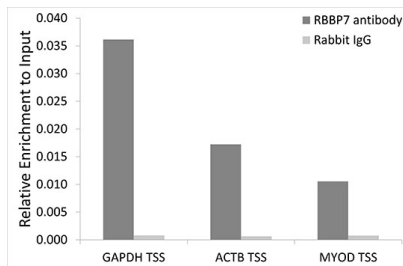
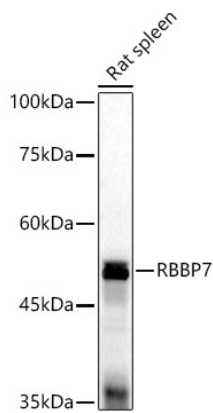
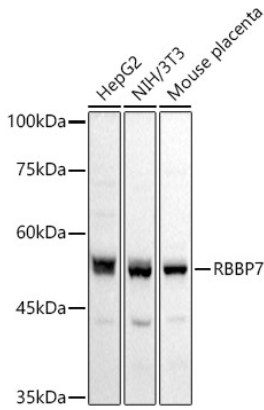
Contact

☎ | 400-999-6126

✉ | cn.market@abclonal.com.cn

🌐 | www.abclonal.com.cn

Validation Data



Validation Data

Immunohistochemistry analysis of paraffin-embedded Rat lung using RbAp46/RBBP7 Rabbit pAb (A13456) at dilution of 1:100 (40x lens). High pressure antigen retrieval performed with 0.01M Citrate buffer (pH 6.0) prior to IHC staining.